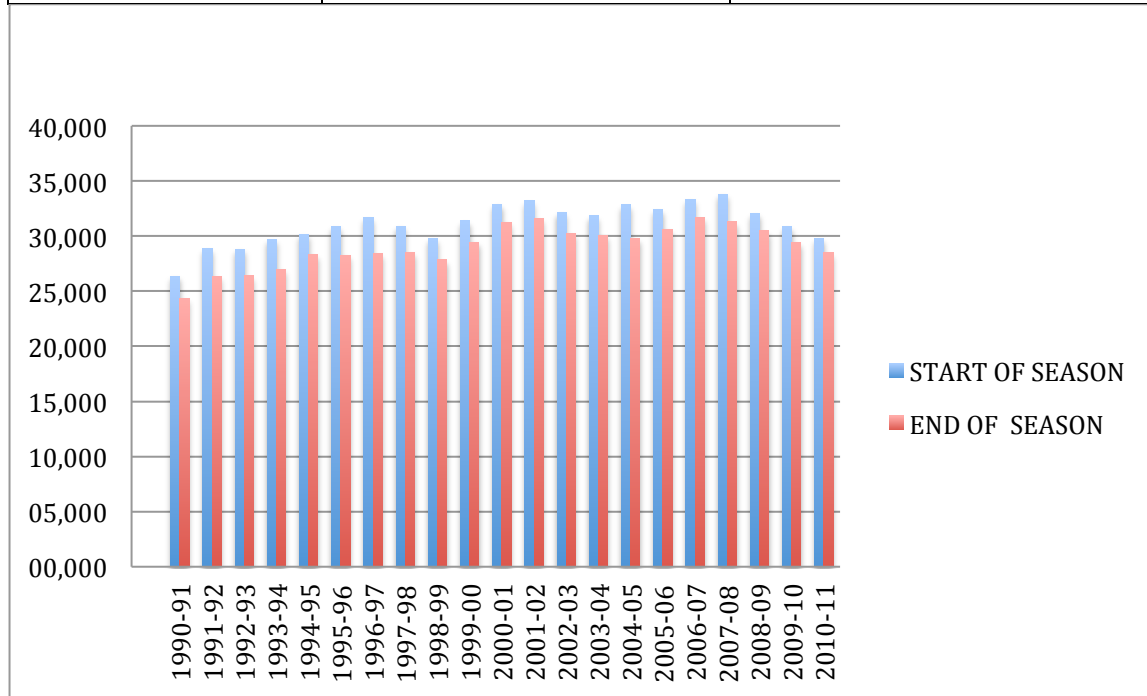


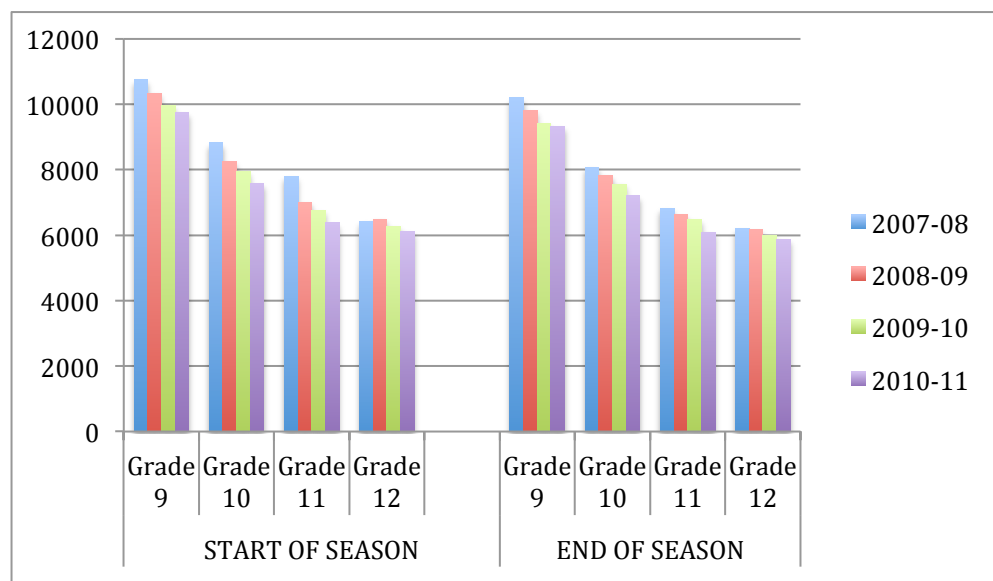
Appendix C – Football Participation

SCHOOL YEAR	START OF SEASON	END OF SEASON
1990-91	26,361	24,350
1991-92	28,868	26,340
1992-93	28,790	26,400
1993-94	29,706	26,978
1994-95	30,170	28,347
1995-96	30,868	28,271
1996-97	31,662	28,408
1997-98	30,883	28,525
1998-99	29,796	27,863
1999-00	31,392	29,441
2000-01	32,907	31,235
2001-02	33,205	31,618
2002-03	32,182	30,278
2003-04	31,821	30,055
2004-05	32,862	29,743
2005-06	32,414	30,596
2006-07	33,349	31,709
2007-08	33,792	31,281
2008-09	32,073	30,465
2009-10	30,896	29,442
2010-11	29,807	28,495



Appendix D – Football Participation Numbers by Grade

	START OF SEASON				END OF SEASON			
	Grade 9	Grade 10	Grade 11	Grade 12	Grade 9	Grade 10	Grade 11	Grade 12
2007-08	10746	8815	7801	6430	10190	8078	6821	6192
2008-09	10334	8248	7007	6484	9816	7825	6642	6173
2009-10	9951	7937	6746	6262	9403	7561	6490	5988
2010-11	9752	7580	6375	6100	9325	7205	6093	5872



Appendix E – Area Meeting Straw Polls

Straw Polls (observation estimates only)

	Games in a Season		Tournament Plan	
	9 Game Season	8 Game Season	All Play (Ad Hoc)	Current Model
Barneveld	10	20	9	X
West Allis	12	20	17	25
Antigo	35%	65%	X	X
Watertown	9	20	15	18
Appleton	14	50	10	90
Rice Lake	9	24	4	26
Black River Falls	5	29	X	X

This poll was not scientific and was only a show of hands.

Appendix F – 2010 WIAA Level One Scores