

La Crosse Center Tournament Booklet



Girls
Feb. 25-26-27

Boys
March 4-5-6



Congratulations on your win!

Sunday Things To Do

1. Coaches are asked to print out season summary reports for all the teams in your division on Saturday night so that you have an opportunity to review prior to the Zoom State Qualifier Seeding Meeting.
2. Join Zoom Meeting with Kate Peterson Abiad and coaches for seeding state tournament teams. Each head coach will receive an invite to join the zoom meeting prior to that morning

Girls	Boys
Div. 5 – 8 a.m.	Div. 5 - 9 a.m.
Div. 4 – 9 a.m.	Div. 4 - 10 a.m.
Div. 3 – 10 a.m.	Div. 3 - 11 a.m.
Div. 2 – 11 a.m.	Div. 2 - 12 p.m.
Div. 1 – Noon	Div. 1 - 1 p.m.
3. Read this booklet which should answer the majority of questions about Going to state.
4. Plan for Media Zoom Telephone conference with Todd Clark at appointed times - see next page.
5. Updated stats email Lisa Gagag in our office: lgagas@wiaawi.org
7. Kate will provide each team with a code for ticketmaster. Teams will have until 8 a.m. on Wednesday morning to purchase tickets before remainder tickets open to the public.

Monday Things to Do

Submit tentative starting line-up, noteworthy information and player honors using the online form under the Tournament Information option on the Basketball webpage.

Apparel Sales

- All apparel sales will be online through Mada Custom at <https://www.madacustom.com/q/school-stores>. The online store will close the Wednesday following each of respective tournaments. There will be no on-site sales of apparel.

Head Coaches/Media Zoom Conference Call Schedule

The cooperation of head coaches is required in participating in a media Zoom conference call the Sunday prior to the State Tournament. The girls Zoom conference will be Sunday, Feb. 21, and the boys conference will be Sunday, Feb. 28. Please find the times your head coach is scheduled to participate on the WIAA Basketball Tournament Zoom conference call from the listing to the right.

Head coaches will receive the invitation to the Zoom conference on Sunday morning or early afternoon, which will be sent to the email you received the Zoom invitation for the seeding meeting earlier in the day.

We ask coaches to connect to the Zoom conference five minutes prior to his/her scheduled participation on the call. The order of coaches on the call is determined by numerical order according to sectional number.

When you connect to the meeting, you are placed in the waiting room. The WIAA moderator will enter you into the conference when your segment of the conference begins. Please have the username on screen be your full name; so we can easily identify you in the participant list.

Once in the conference, the head coach will be asked to comment briefly on the team followed by an open forum of questions from the media in the conference. Each coach's participation on the call will be approximately 8 minutes. The WIAA moderator will monitor the time. Coaches may "leave meeting" following their participation in the conference.

Basketball State Tournament Conference Schedule

Girls: Sunday, Feb. 21
Boys: Sunday, Feb. 28

Division 5

6 p.m.	Sectional 1 Winner
6:08 p.m.	Sectional 2 Winner
6:16 p.m.	Sectional 3 Winner
6:24 p.m.	Sectional 4 Winner

Division 4

6:32 p.m.	Sectional 1 Winner
6:40 p.m.	Sectional 2 Winner
6:48 p.m.	Sectional 3 Winner
6:56 p.m.	Sectional 4 Winner

Division 3

7:04 p.m.	Sectional 1 Winner
7:12 p.m.	Sectional 2 Winner
7:20 p.m.	Sectional 3 Winner
7:28 p.m.	Sectional 4 Winner

Division 2

7:36 p.m.	Sectional 1 Winner
7:44 p.m.	Sectional 2 Winner
7:52 p.m.	Sectional 3 Winner
8 p.m.	Sectional 4 Winner

Division 1

8:08 p.m.	Sectional 1 Winner
8:16 p.m.	Sectional 2 Winner
8:24 p.m.	Sectional 3 Winner
8:32 p.m.	Sectional 4 Winner

Other Reminders

Sunday prior to State Tournament

* Proof your team's program page information posted on the WIAA website. Log-in and go to: Sports>Tournament Information>Tournament Information to access the Roster and Statistics program pages with edits submitted by 9 a.m. Monday.

Monday prior to State Tournament

* Submit tentative starters, players' honors and anecdotes on the online form located on the Score Center in the "Team Info" menu.

TEAM MEALS

- Teams are responsible for making their own arrangements for all meals.

FINANCIAL REIMBURSEMENTS

- In their January 27 meeting, the WIAA Board of Control took action to suspend travel reimbursements to schools qualifying for state tournament/culminating events for 2021 winter, alternate fall and spring seasons. This includes mileage, meal and hotel reimbursements. This was in response to the drastic reduction of revenue generated with limited spectator attendance during the COVID-19 pandemic.

DAILY SCHEDULE

THURSDAY'S SCHEDULE (La Crosse Center)

- 8:00 am Teams competing in Semifinal Division 5 (1 vs. 4) may arrive on site
- 8:30 am Venue opens for fans
- 8:45 am Teams competing in Semifinal 1 may take the court
- National anthem and Starting Lineup
- 9:05 am **Division 5 Semifinal (1 vs. 4)**
- *Spectators will be given 15 minutes to depart the site after the conclusion of the game.
- 10:45 am Sanitization of benches, locker rooms, scorer's table, basketballs, spectator seats, bathrooms, etc.
- 11:35 am Teams competing in Semifinal Division 5 (2 vs. 3) may arrive on site
- 12:05 pm Venue opens for fans
- 12:15 pm Teams competing in Semifinal 2 may take the court
- National anthem and Starting Lineup protocol TBD
- 12:35 pm **Division 5 Semifinal (2 vs. 3)**
- * Spectators will be given 15 minutes to depart the site after the conclusion of the game.
- 2:15 pm Sanitization of benches, locker rooms, scorer's table, basketballs, spectator seats, bathrooms, etc.
- 6:00 pm Teams competing in the Championship game may arrive on site
- 6:30 pm Venue opens for fans
- 6:45 pm Teams competing in the State Championship may take the court
- National anthem and Starting Lineup
- 7:05 pm **Division 5 State Championship Game**

FRIDAY'S SCHEDULE

(La Crosse Center)

- 8:00 am Teams competing in Semifinal Division 4 (1 vs. 4) may arrive on site
- 8:30 am Venue opens for fans
- 8:45 am Teams competing in Semifinal 1 may take the court
- National anthem and Starting Lineup
- 9:05 am **Division 4 Semifinal (1 vs. 4)**
- *Spectators will be given 15 minutes to depart the site after the conclusion of the game.
- 10:35 am Sanitization of benches, locker rooms, scorer's table, basketballs, spectator seats, bathrooms, etc.
- 11:25 am Teams competing in Semifinal Division 4 (2 vs. 3) may arrive on site
- 11:55 am Venue opens for fans
- 12:05 pm Teams competing in Semifinal 2 may take the court
- National anthem and Starting Lineup
- 12:25 pm **Division 4 Semifinal (2 vs. 3)**
- * Spectators will be given 15 minutes to depart the site after the conclusion of the game.
- 2:15 pm Sanitization of benches, locker rooms, scorer's table, basketballs, spectator seats, bathrooms, etc.
- 5:30 pm Teams competing in the Championship game may arrive on site
- 6:00 pm Venue opens for fans
- 6:15 pm Teams competing in the State Championship may take the court
- National anthem and Starting Lineup
- 6:35 pm **Division 4 State Championship Game**

SATURDAY'S SCHEDULE

(La Crosse Center)

- 8:00 am Teams competing in Semifinal Division 2 (1 vs. 4) may arrive on site
- 8:30 am Venue opens for fans
- 8:45 am Teams competing in Semifinal 1 may take the court
- National anthem and Starting Lineup
- 9:05 am **Division 2 Semifinal (1 vs. 4)**
- *Spectators will be given 15 minutes to depart the site after the conclusion of the game.
- 10:35 am Sanitization of benches, locker rooms, scorer's table, basketballs, spectator seats, bathrooms, etc.
- 11:25 am Teams competing in Semifinal 2 may arrive on site
- 11:55 am Venue opens for fans
- 12:05 pm Teams competing in Semifinal 2 may take the court
- National anthem and Starting Lineup
- 12:25 pm **Division 2 Semifinal (2 vs. 3)**
- * Spectators will be given 15 minutes to depart the site after the conclusion of the game.
- 2:15 pm Sanitization of benches, locker rooms, scorer's table, basketballs, spectator seats, bathrooms, etc.
- 5:30 pm Teams competing in the Championship game may arrive on site
- 6:00 pm Venue opens for fans
- 6:15 pm Teams competing in the State Championship may take the court
- National anthem and Starting Lineup
- 6:35 pm **Division 2 State Championship Game**

GAME DAY INFORMATION

PARKING

- Remain on your bus until the team host collects Covid Verification form.

PRE-CONTEST SCREENING

- Athletes and coaches shall check their temperature at home before attending games. If a student- athlete or a coaching staff member has a temperature of 100.4 degrees or above, they should not attend the WIAA Tournament games.
- Any student-athlete that has symptoms and/or fever should not travel with the team or participate in any competition or team activities and should begin self-quarantine immediately.
- What if athlete is sick or exposed? – refer to the WIAA Fall Return to Play Considerations

VERIFICATION FORM

- When departing for each contest in the WIAA State Tournament Series, coaches must take their tracing sheet and verification form signed by the coach and athletic director acknowledging the tracing sheet's accuracy.
- When arriving at the venue for a contest, COVID paperwork should be collected by the site manager, or someone acting in official capacity, in the parking area, prior to teams unloading their bus.
- If a coach cannot, or does not produce the verification form, it shall be reported to the WIAA office by the opposing coach.
- Failure to produce the verification form and/or the tracing sheet will result in a forfeit.

COVID-19-Coach/AthleteSymptom Checklist Verification Form: <https://www.wiaawi.org/Portals/0/PDF/Health/Covid/WIAA-Fall-Culminating-Event-Req-Verification.pdf>

TEAM BUSES

- Pull up to the South Entrance to the La Crosse Center to unload your team and coaches.
- LOT D (Octoberfest Grounds) - is available for bus parking during the game. Team hosts will provide you with a map when they meet the bus upon your arrival.
- Bus Drivers will not be allowed admission into the game without a ticket. Limitations on spectators makes this necessary.
- Provide your cell number to the Team Host who meets the bus. They can call you to notify you when the team will be ready to be picked up after the game.



Parking Map

Parking Facility Address

A	La Crosse Center Ramp	201 Jay St
B	Main Street Ramp	115 3rd St N
C	Market Square Ramp	410 Jay St
D	Oktoberfest Grounds	711 3rd St N
E	Pine Street Ramp	222 Pine St
F	Pumphouse Lot	119 King St
G	Riverside Ramp	424 2nd St S
H	7th Street Well Lot	131 7th St S

Estimated Walk Time

10 Minute Walk

Right of Way

Traffic flow

- ADA Accessible Parking Spaces
- Electric Vehicle Charging Station
- Elevators

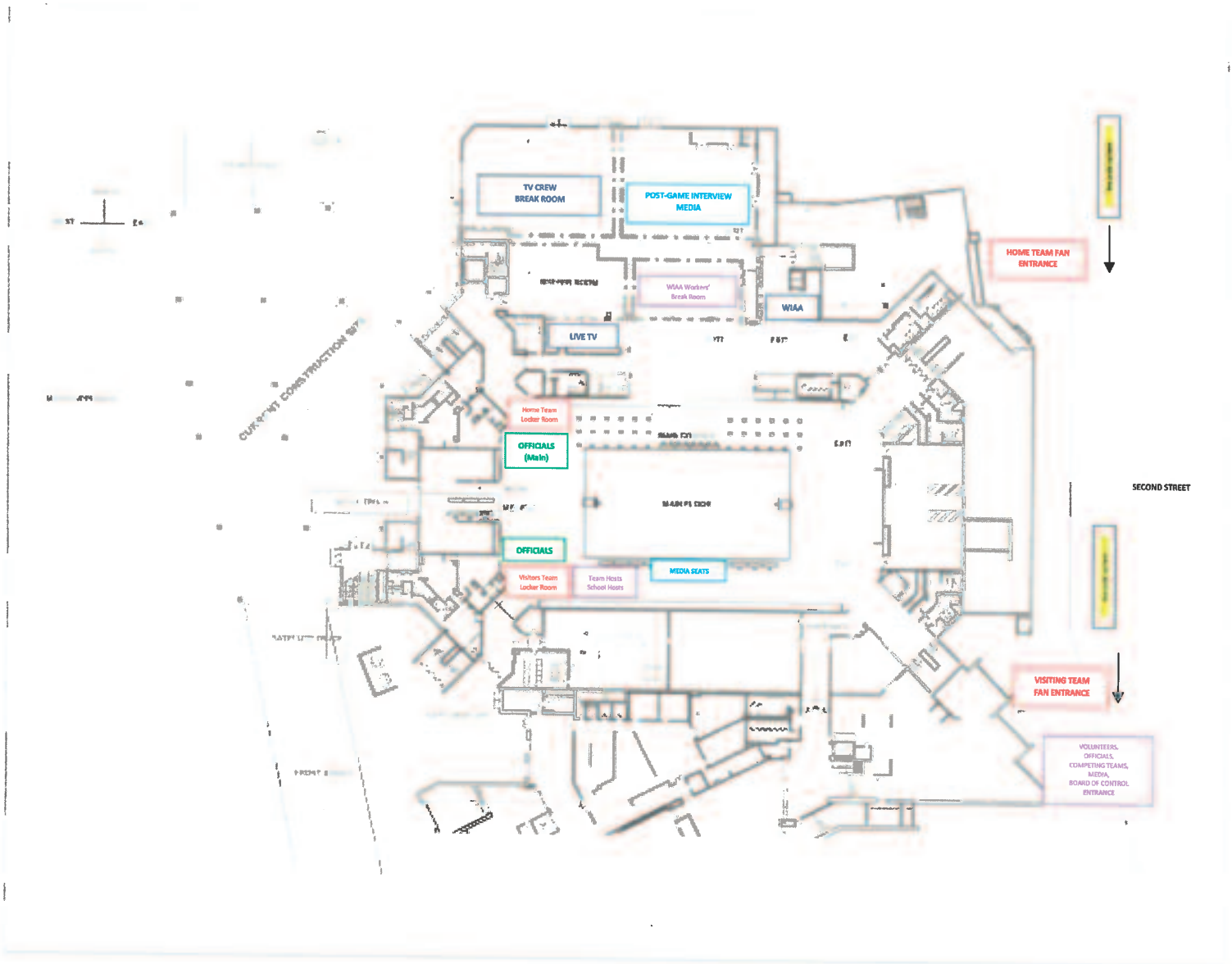
ParkMobile

PARKLaCrosse

For more information
<http://www.lacrossewi.gov/search/for/Parking>



VENUE MAP



ENTRY INTO THE LA CROSSE CENTER

- Masking is required upon entry to building and throughout your stay.
- A maximum of 22 individuals will be allowed admittance – party to include coaches, players and managers.
- Your team will have a host assigned to them for each game they play. This individual will assist you throughout your stay at the La Crosse Center. Please feel free to ask your host any questions.
- Badges for coaches and others who will be seated on the team bench (maximum party of 22 including players) will be distributed upon your arrival.
- Teams can arrive one hour prior to tip off. there are no provisions for watching other games that day.
- Bus drivers must have a ticket to gain admission, they must enter through the main gate at the front of the building (2nd Street).

PARKING AT LA CROSSE CENTER

SPECTATORS

- LOT A - has been reserved for State Tournament Parking. This ramp is conveniently located directly across the street from the La Crosse Center and provides plenty of parking for our State Tournament fans.

Reserve your guaranteed parking spot for the 2021 WIAA State Basketball tournaments at the La Crosse Center [Click Here](#)

This link will take you to the menu to select the time and event you wish to park

SPECTATORS WITH DISABILITIES

- LOT A located directly across the street from the La Crosse

Center has parking spaces available on a first come basis. Drop off may be available at the front of the building, prior to parking.

STATE TOURNAMENT WORKERS

- LOT G - has been reserved for State Tournament Workers
 - WIAA Staff, Team Hosts, Officials' Hosts, School Hosts, Game Officials, Volunteers
- Park and walk down 2nd Street to the South Entrance identified for WIAA workers, Volunteers, Media

MEDIA

- LOT A - is available for State Tournament Parking. This ramp is conveniently located directly across the street from the main entrance to the La Crosse Center.

Reserve your guaranteed parking spot for the 2021 WIAA State Basketball tournaments at the La Crosse Center [Click Here](#)

This link will take you to the menu to select the time and event you wish to park

- Park and walk across the street to the South Entrance, identified for Media.

NFHS ADJUSTMENTS

PREGAME PROTOCOL (3-4-5)

- For all Tournament games, attendees to the referee and the head coach and one captain from each team with each team standing on the center circle on each side of the division line.
- All individuals maintain a social distance of 6 feet or greater at the center circle.
- Suspend handshakes prior to and following the Pregame Conference.

TEAM BENCHES (1-13-1)

- Social distancing
- Limit the number of bench personnel
- Additional chairs or rows may be added
- Create separation between the team bench and spectator seating behind the bench.
- Limit contact between players when substituting.
- All members of the team's travel party must be masked at all times.

OFFICIALS TABLE (2-1-3)

- The host should sanitize the table before the game and at half time.
- Place officials table sufficiently away from the sideline to allow for additional space for substitutes.
- Limit seats at the table to essential personnel (scorer, timer, announcer, timeout coordinator) with a recommended distance of 6 feet or greater between individuals.
- All individuals at the table must be masked at all times.

PRE AND POST GAME HANDSHAKES

- Suspend the pregame introduction handshakes.
- Suspend post game protocol of shaking hands.

OFFICIALS UNIFORM AND EQUIPMENT (5-3)

- Long-sleeved shirts are permissible. (5-1-3)
- Electronic whistles are permissible
- Cloth face coverings must be worn, unaltered.
- Gloves are permissible.

LOCKER ROOMS

- Teams playing in a session will be allowed entry into their locker rooms immediately upon arrival. After the game teams have 20 minutes to exit for sanitization purposes.
- Locker room access is permitted only for uniformed players or individuals wearing a Floor & Locker Room Access Badge. The media is not allowed into a locker room.
- Showering will not be allowed after the game.
- State law (175.22) prohibits the use of cell phones (and other image recording devices) in locker rooms except in emergency situations.

ACCESS TO PLAYING FLOOR

- Each team may have a maximum of 22 people in their bench area.
- The number of allowed players in uniform is 18.
- Head coaches, assistants, managers, etc., will be required to wear a Floor & Locker Room Access Badge to be allowed courtside.
- You will be positioned such that in the second half your team will shoot at the basket closest to where their coaches and reserves are seated. Team hosts/hostesses will assist in directing you to your bench area.
- Teams must bring their own basketballs for warmups.
- A 15-minute warm-up period will be provided prior to the start of each game. At 0:00 on the clock, the National Anthem will be performed followed by player introductions. All members of your team will be introduced prior to your first game. Teams must be certain to be back on the floor by 0:00 on the clock.

MASKS

- All athletes, travel party members, and bench personnel will be masked at all times.
- There are no allowed exemptions to the mandatory mask rule during the WIAA State Tournament.
- Masks must be worn appropriately on the face.
- Improper masking should be addressed immediately
- Coaches must continuously address their players whose masks have come down or been pulled down, to secure their masks properly.
- Officials, may make a statement to the coaches asking them to enforce the mask rule with their players.
- Officials may wait until all players are properly masked to put the ball back in play
- If appropriate adjustments are not made and adhered to, the player(s) will be removed from the court until at least the next dead ball and a bench warning will be issued.
- If a team receives two bench warnings due to improper masking, a bench technical will be issued.
- Does not count toward coach ejection
- Coach does not lose coaching box
- Does not count as a Personal Foul on any individual or team.

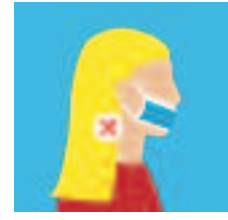
*An official, coach, administrator may verbally warn a player to properly mask. No penalty is associated with this verbal warning. When an official deems that an individual(s) is not making the appropriate adjustments to keep their mask over their mouth, nose and chin, they will remove the individual(s) from the court. They will not be allowed to return until the next dead ball. The first bench warning is issued at this point. (If several players are sent to the bench at one time, this constitutes one bench warning). Any additional violations of the mask rule will result in the removal of the player(s) until next dead ball and a bench technical. Penalty: 2 free throws and the ball.



Proper Masking
Covers nose, mouth and chin



Improper masking
Worn under the chin with
Nose and mouth exposed



Improper Masking
Nose or mouth uncovered

GAME BALL

- The official ball of the 2021 WIAA State Basketball Tournament is the Spalding Legacy TF-1000.
- Two sanitized game balls shall be placed at the scorer's table prior to the start of the game. These balls shall not be used for warm-ups.
- Competing teams shall bring their own balls for warm-ups.
- The host school/venue should ensure that the ball is sanitized during time-outs, halftime, and during significant stoppage in play. The second game ball can be put into play, while sanitizing the other.
- Sanitizer should be provided by the host team at the table. See recommended basketball cleaning methods. [WilsonBall CleaningRecommendations.pdf](#) (wiaawi.org)

PREGAME WARMUP

- Warm-up procedures to be used during the WIAA Basketball Tournament are as follows:

Game Clock

- 15:00 Warm-up begins. Officials enter the court and go directly to positions to supervise
- 12:00 Official conduct pre-game meeting (see NFHS Pre-Game Protocol)
- 10:00 Officials proceed to scorer's table
- Check score book
- Brief the Scorer and Timer
- Check game ball for NFHS authenticating mark
- Check alternating possession arrow
- 1:30 Officials introduce themselves to coaching staff and discuss legality of player equipment
- 0:00 National Anthem, followed by Player Introductions

JERSEY COLOR

- The higher seeded team will wear WHITE jerseys and be considered home.
- Laundry matt near LaCrosse Center
The Laundry Room
1121 Jackson St.
La Crosse, WI 54601
608-782-2222

JUMP BALL

- The jump ball will be eliminated for all tournament games. The game will start with a throw-in by the higher seeded team.
- Alternating possession shall be used for the rest of regulation play
- To start the first overtime period, use a coin toss to determine which team is awarded the ball.
- Any additional overtimes will begin with the alternating possession.

CONTEST OFFICIALS

- Must be masked upon arrival to the site, and throughout the competition, until they depart.
- Officials are not responsible for monitoring activities on the sidelines, such as social distancing, hand washing, symptoms of illnesses and other such issues. This monitoring remains with the coaching staff and school personnel.
- Explain the masking policy at the pregame coach/captain meeting.
- Masks must be worn appropriately on the face.
- If an athlete does not wear their mask appropriately, officials, coaches and game administrators are to immediately address the situation.
- If appropriate adjustments are not made and adhered to, the player(s) will be removed from the court until at least the next dead ball and a bench warning will be issued.
- If a team receives two bench warnings due to improper masking, a bench technical will be issued.

TEAM TIME-OUTS

- All team time-outs will be either thirty seconds or one minute in length. Teams must gather in their own bench area only, not out on the playing floor.
- Media time-outs will be taken at the 15, 11, 7 and 3 mark each half.
- In addition, Each coach will have 2-60 second time-outs and 2-30 second time-outs for the game for this year only one additional 30 second time-out will be granted to each team each half. This additional time-out does not carry.

DOUSING COACH

- Teams are prohibited from dousing their coach with water courtside or in the locker room.

COACHING BOX

- Only the head coach is allowed to be off his/her chair and required to stay within the confines of the coaching box.

BACKBOARDS

- The WIAA Board of Control has ruled that financial responsibility for a broken backboard must be assumed by the school whose athlete causes the damage.

Post-Game Procedures

- Coaches are asked to plan ahead and inform fans/parents where the team will meet up with them following the completion of any game outside of the arena. Players will not be allowed back onto the court to meet fans or parents.
- When game is complete, head coach of winning team will stay on court for interview
All other members of the team will return to the locker room
Media host will come to get any players requested for interviews
- Players/Coaches being interviewed must take all personal items out of the locker room, and take with them to the interview.
- Media host will escort players/coach to the media room
- All members of travel party will have 20 minutes to meet, gather all of their belongings, and exit.
- No showering is allowed on-site.

Championship Day Information

AWARDS

- At the completion of each Championship game, teams will line up on the sideline in front of the bench in numerical order (lowest to the highest). Starting with the runner up team, players name will be read one at a time. They will step forward pick up medal from table and place around their neck and get photo by VIP and return to the sideline.
- The coach will be announced and he/she will step forward to get trophy and return to the team.
- Team photo will be taken by VIP.
- Championship awards will be held in same fashion.
- The runner up team should stay on the sidelines for the championship awards.
- State championship teams are not allowed to distribute t-shirts, caps, etc., to their players until after the awards ceremony has been completed and your team is in the locker room.
- Each awards ceremony will recognize each individual player of the runner-up team followed by the presentation of the trophy to the runner-up coach. The same procedure will be followed for the championship team.
- The awards procedure will include reading each player's name (maximum of 18) in the order listed in the program as they pick up their medal. The names of assistant coaches, managers, statisticians, etc., will not be read. **An injured athlete will be allowed to participate in the awards ceremony provided he/she is included in the roster allotment for that game.**

LOCKER ROOM ACCESS

- Be respectful of the locker rooms you are using. Team hosts will inspect your locker room prior to your arrival and after your departure. Please do your best to clean up before you leave. Any damage to the venue by any team will be noted and billed.

BASKETBALLS & NETS

- Each team will be given a souvenir basketball after the completion of their games.
- An autograph basketball will be provided to each championship team after the awards ceremony. Teams will not be allowed to cut down the nets at the conclusion of their game.

MEDIA INTERVIEWS

1. Post-game interviews will be conducted in this order:
 - a. Head coach of winning team will be directed to a brief, live, on-court TV interview immediately following the game.
 - b. Coach returns to the locker room.
 - c. Media host will escort requested coach and player(s) for the press conference.
2. NOTE: For championship games the schedule for press conferences will begin AFTER the awards ceremony.

Ticket Information

DOORS OPEN

- Doors will open approximately 30 minutes prior to the start of each session.
- Masks are required.
- All spectators and any of the items they are carrying are subject to search.
- Spectators attempting to enter the LaCrosse Center carrying prohibited item(s) will have them confiscated or be told to return the item(s) to their vehicle. Confiscated items will not be returned. The La Crosse Center is not responsible for items left behind.

TICKETS FOR ALL GAMES

- Each school will receive a ticketmaster code to purchase allotted tickets. Tickets will be sold in pods. Fans must sit in purchased seats and remain socially distanced.
- Each school will receive 2 complimentary admission for administrators. These 2 individuals will not have seats in the stands but will be expected to work in the arena to handle their own fans during the game(s). * See School Administrator and Athletic Director Expectations
- Faculty, half-time performers, bus drivers, etc., must all have tickets to gain entry into the La Crosse Center. Only the 22 members of your team party will be allowed free admission to the tournament.
- Fans should not attend if they are not feeling well or have any symptoms of Covid.

ACCESS FOR INDIVIDUALS WITH DISABILITIES

- There are ADA seating locations scattered throughout the arena. All wheelchairs must be positioned in the wheelchair and wheelchair companion seating areas.
- Seating in the ADA area will only be allowed with a corresponding assigned ticket.
- There are public restrooms and concession stands which are ADA compliant.
- "Service Dogs" are dogs specifically trained to do work or perform tasks for people with disabilities, including physical, sensory, psychiatric, intellectual, or mental disabilities. We would also recommend that an individual with a service dog contact the ticket office for seating that best accommodates their needs.

SPECIAL SITUATIONS

- If your school or team has a special situation that should be brought to the attention of the WIAA, contact Kate Peterson Abiad at (715) 344-8580 (work) or (715) 496-0456 (cell).

Support Group Guidelines

BANDS

No bands are allowed at the State Tournament.

NATIONAL ANTHEM

- The National Anthem will be sung or performed for each game when the scoreboard reaches 0:00.
- Please indicate on your Tournament Information Form if your school has an individual/group interested in singing the National Anthem. If both schools are interested, the FIRST school alphabetically will perform.
- An email will be sent out on Tuesday indicating which school will be responsible for singing the National Anthem for each session on Thursday, Friday and Saturday.

HALFTIME PERFORMER GUIDELINES

- Masks are required.
- Cheer Squad or Pom pon/dance squads are welcome. However, only plastic or metallic pom pons will be allowed on the basketball floor. They are only allowed on court during halftime, all other times they have to remain in their seats.
- There is no room available in the La Crosse Center for squads to change into their uniforms, store uniforms, or store other equipment. Please come dressed to perform.
- Only soft-sole shoes are allowed on the basketball floor.
- The FIRST team alphabetically will perform first.

HALF-TIME PERFORMANCES

- Each school will be given the option to have one group from their school perform at half-time of their game. The WIAA will not provide specially priced tickets or financial assistance to these groups.
- Half-time programs may last a maximum of three minutes per school. This includes the time needed to get on and off the basketball floor.
- A representative of the WIAA will meet with each pom/dance coach prior to the start of each game to review the half-time program performing order. The FIRST school alphabetically will perform first.
- The advisor for the group performing at half-time must prepare the narration to be used in introducing their half-time program. A representative of the WIAA will ask for this form prior to the start of each game.
- It is **NOT** necessary to contact the WIAA in advance of the tournament to notify us that you will have a group performing at half-time.

MUSIC FOR HALF-TIME PERFORMANCES

- Groups may perform to pre-recorded music approved by school administration. Please bring a flash drive of your music.
- The advisor must be present at the scoring table to assist when the music should start for their teams performance.

MASCOTS

- The Wisconsin Interscholastic Athletic Association objects to the use of activities, materials, logos, apparel, mascots or gestures that are profane, vulgar, insulting or offensive to others. The membership disapproves of any form of taunting or expression that is intended or designed to embarrass, ridicule, disrespect or demean others under any circumstances including on the basis of race, religion, gender or national origin.

School Photographer & Videographer

- Each competing school will be allowed to have one individual designated as a school photographer and one videographer for the game(s) in which their team is playing.
- Commercial use of photos taken by a school photographer is prohibited.
- No live broadcast is allowed.
- The individuals designated as your school photographer and videographer must have an admission ticket to gain entry into the La Crosse Center. In your School Administrator packet, there is a pass labeled "School Photographer" and "School Videographer". Please give these badges to your school photographer and school videographer. Remember the limit is 2 individuals/school.
- School photographers/videographers are limited to the ends of the court. The individual must stay off the court. Still cameras only will be allowed courtside. Individuals using a camcorder must film from the stands.
- While taking pictures, the school photographer must sit or kneel so fans can see. When the game clock is running, photographers

must remain seated.

- Electronic flashes may be used. Please, however, use good judgment. Don't use a flash directly into the face of a player.
- Tripods may NOT be used.
- For the safety of players and game officials, no equipment may be left sitting on the floor unattended. All equipment used must be held in hand or carried by a strap over the shoulder.
- Please leave the floor immediately after your school's game has been completed.

Crowd Control Guidelines

Sportsmanship and self-control take on new dimensions during the State Basketball Tournament. Therefore, crowd control responsibilities need additional attention.

Fans are not allowed on the floor at the conclusion of any game.

SCHOOL ADMINISTRATOR AND ATHLETIC DIRECTOR EXPECTATIONS

Each competing school will be allowed to have one administrator and their athletic director stand in front of their spectators on the gray lower service floor area for the game their team is playing. These individuals need to wear a Floor Access & Locker Room Access Badge(from the team hosts). This will allow these two individuals access to the floor and locker room areas. These badges are not valid for admission into the La Crosse Center.

The two individuals wearing these badges are expected to:

- Be responsible for their fans sportsmanship during the game. Be visible and available to Security & WIAA staff.
- Remove illegal items from their fans if requested to do so.
- Prevent their fans from charging the floor at the conclusion of a game.
- Before leaving the La Crosse Center, check the vacated seating areas of their fans for items left behind. This inspection should be done with your WIAA host/hostess.
- Fat heads are allowed in the facility. Just be sure they are tag board size 3'x2'.

ILLEGAL ITEMS & RESTRICTIONS

- The following items **will not be allowed** in the La Crosse Center (all spectators and items are subject to search):
 - Selfie Sticks
 - Strollers, coolers, thermoses, bottles, cans and food and/or beverage items of any kind.
 - Backpacks and any bag larger than 8.5" x 11".
 - Artificial noisemakers: stadium horns, cow bells, bottles with rocks in them, thunder stixs, etc.
 - Weapons of any kind. This includes pocket knives.
 - Pom poms may not have sticks attached to them.
 - Balloons, paper confetti, spray string, inflatables, etc.
 - Alcohol and/or drugs.
 - Large signs.(Fat heads) hand-held sign that is no larger than a piece of tag board that can be held by one person will be allowed. Signs may have tongue depresser sticks attached to them.
 - Laptop computers are allowed.
 - Laser pointers.
 - NO body or face paint is allowed in the La Crosse Center and no face coverings of any type are permitted.
 - No paint stir sticks.
- All spectators are expected to be clothed appropriately with faces clearly visible.
- Antics involving throwing of paper airplanes or coins, etc., will result in the violator being removed from the La Crosse Center
- Fans may not allow others to sit on their shoulders or stand on seats or railings.
- Fans are NOT allowed on the floor of the La Crosse Center following the completion of their game.

VIDEOTAPING RESTRICTIONS

- Spectators will be allowed to bring video recorders into the La Crosse Center and film games provided:
 - They have an admission ticket for entry.
 - They are seated in their assigned seat and do not obstruct the view of other paying spectators or cause crowd control problems.
 - The video recorder must be handheld. Tripods are not allowed.

- The video recorder must be battery operated. There are no provisions to plug into an electrical outlet or to use Menominee Nation Arena electrical outlets to charge battery packs.
- Film is for private use only. No commercial or transmission use is permitted.

Sportsmanship

Good sportsmanship is viewed by the National Federation as a commitment to fair play, ethical behavior and integrity. In perception and practice, sportsmanship is defined as those qualities which are characterized by generosity and genuine concern for others. The ideals of sportsmanship apply equally to all activity disciplines. Individuals, regardless of their role in activities, are expected to be aware of their influence on the behavior of others and model good sportsmanship.

FUNDAMENTALS OF SPORTSMANSHIP

1. Show respect for self and others at all times.
2. Show respect for the officials. Sportsmanship implies the willingness to accept and abide by the decisions of the officials.
3. Know, understand and appreciate the rules of the contest. Sportsmanship suggests the importance of conforming to the spirit, as well as the letter of the rules.
4. Maintain self-control at all times. Don't let the desire to win overcome rational, safe behavior.
5. Recognize and appreciate competitive skill regardless of team affiliation.

Sportsmanship Reveals Character Regardless of the Final Outcome





State Team

WIAA/Rural Insurance Sportsmanship Award Evaluation



Please rate the sportsmanship of participating teams, coaches and fans at the WIAA State Tournament you are observing in the following categories.

(Rating Guide: 1=Worst 5=Best)

	Team	Team
	Rating	Rating
School Administration		
Effort Displayed to Promote Sportsmanship	1 2 3 4 5	1 2 3 4 5

Any "3" ranking or below, indicate specific actions _____

Coaches

Respect Toward Officials	1 2 3 4 5	1 2 3 4 5
Handling of Players and Respect for Opposing Team	1 2 3 4 5	1 2 3 4 5
Courtside Demeanor	1 2 3 4 5	1 2 3 4 5
Respect for Game Management Personnel	1 2 3 4 5	1 2 3 4 5

Any "3" ranking or below, indicate specific actions _____

Players

Respect Toward Officials	1 2 3 4 5	1 2 3 4 5
Respect Toward Opposing Players (i.e., taunting, etc.)	1 2 3 4 5	1 2 3 4 5
Court Demeanor (i.e., showboating)	1 2 3 4 5	1 2 3 4 5
Respect for Game Management Personnel	1 2 3 4 5	1 2 3 4 5

Any "3" ranking or below, indicate specific actions _____

Spectators/Support Groups

Respect Toward Officials	1 2 3 4 5	1 2 3 4 5
Respect Toward Opposing Team (i.e., taunting, etc.)	1 2 3 4 5	1 2 3 4 5
Spirit Demeanor (i.e., behavior, attitude, negative chants)	1 2 3 4 5	1 2 3 4 5
Respect for Game Management Personnel	1 2 3 4 5	1 2 3 4 5

Any "3" ranking or below, indicate specific actions _____

Hosting Facilities (Applicable for Hotel/Restaurant Only)

Behavior of Team and Coaches at Hotel/Restaurant	1 2 3 4 5	1 2 3 4 5
Behavior of School Support Groups at Hotel/Restaurant	1 2 3 4 5	1 2 3 4 5

Should be Considered for Award _____

Should NOT be Considered for Award (please comment) _____

Comments _____

Evaluation by: _____

Thank You.

Post Tournament

FINANCIAL REIMBURSEMENTS

- In their January 27 meeting, the WIAA Board of Control took action to suspend travel reimbursements to schools qualifying for state tournament/culminating events for 2021 winter, alternate fall and spring seasons. This includes mileage, meal and hotel reimbursements. This was in response to the drastic reduction of revenue generated with limited spectator attendance during the COVID-19 pandemic.

ORDERING EXTRA MEDALS

- Additional sectional and/or state tournament medals can be ordered at <https://wiaa.escoinc.com> or call Erffmeyer & Son Company at 1-800-852-4266. You do not need to contact the WIAA. All schools will work directly with ESCO.

ORDERING PHOTOS

- VIP is the official photographer of the WIAA. Any photos taken during the Awards Ceremony and game action can be ordered off the VIP website < www.vipis.com >.

ORDERING GAME VIDEO

- PrepFilms.com is the place to purchase DVD copies of the State Tournament games. DVD's are usually available within weeks of the completion of the tournament.

SOUVENIR GAME BALL

- A game ball from the tournament will be given to the coaches of each participating school after their tournament games are completed. Only one ball per school will be available.
- Championship teams will also receive an autograph ball to commemorate the event.

SOUVENIR APPAREL

- All apparel sales will be online through Mada Custom at <https://www.madacustom.com/q/school-stores>. The online store will close the Wednesday following each of respective tournaments.

Phone Numbers in La Crosse

Kate Peterson Abiad, Tournament Manager, WIAA (cell)	(715) 496-0456
Kassie Mortimer, Assistant Director, WIAA (cell)	(715) 204-5379
La Crosse Center	(608) 789-7400