

BASKETBALL IN WISCONSIN HIGH SCHOOLS

Basketball, as a Wisconsin high school sport, has had a remarkable development and growth during the last twenty years. Men in a position to know, estimate that not more than forty high schools were playing basketball in 1900. This limited number was undoubtedly due to two factors, first, the comparative newness of the game, and second, the lack of adequate places in which to play.

Basketball proved an interesting game and developed rapidly, especially in the Fox River Valley, from 1900 to 1904. In 1905 Lawrence College—then Lawrence University—divided the state into eight districts and in March of that year conducted the first Wisconsin high school basketball tournament.

From the first Lawrence College paid train fare for eight men and local entertainment for the four teams surviving the first round.

Each team competing was selected by the Lawrence College committee and in the judgment of the committee was the best team in the district represented.

From 1905 to 1916 the winner of the Lawrence tournament was recognized as the state champion. The following is a list of the Lawrence tournament winners for those years:

1905	Fond du Lac
1906	Appleton
1907	Oshkosh
1908	Superior
1909	Menomonie
1910	La Crosse
1911	Appleton
1912	Madison—Central
1913	Janesville
1914	Appleton
1915	Fond du Lac
1916	Baraboo
1917	Wittenberg
1918	Wisconsin Rapids

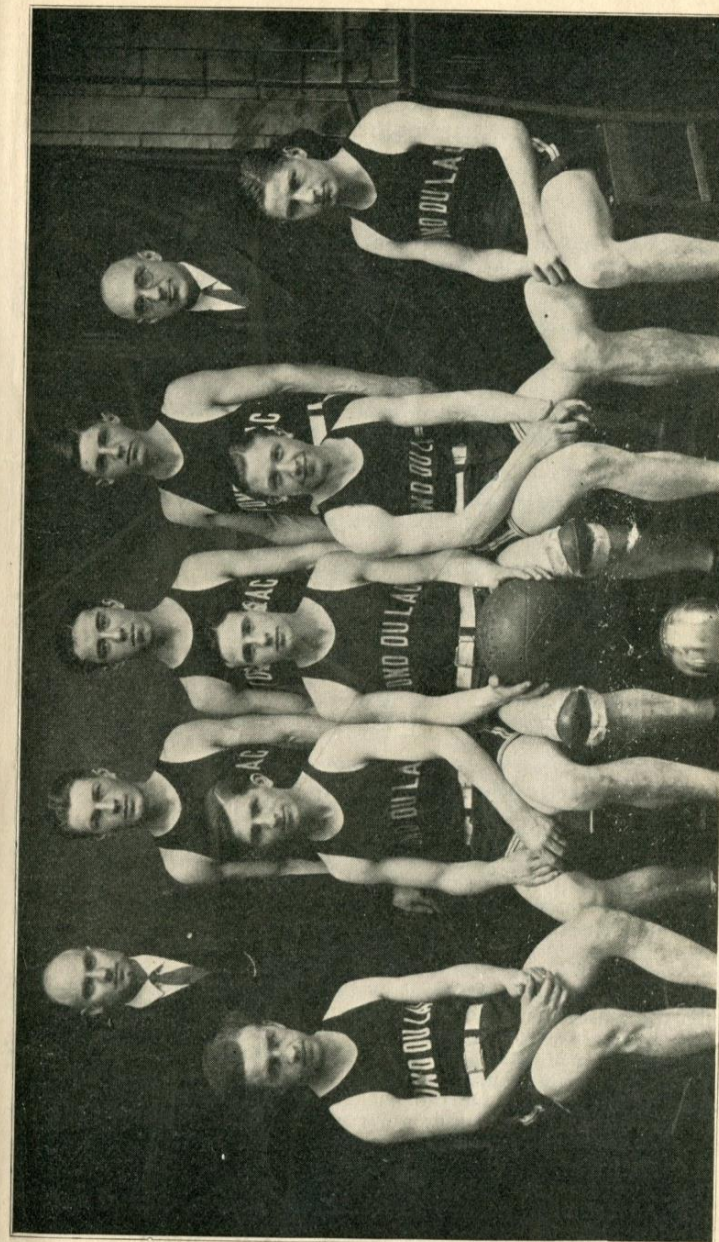
The Lawrence College tournaments did much to stimulate interest in high school basketball and will always be given credit for the rapid growth of the sport in Wisconsin.

In the spring of 1915 Wisconsin Normal School athletic directors started holding district invitation basketball tournaments. In 1916 the idea was developed and each district winner was sent to a state tournament held at the Milwaukee Normal School.

Because of the territory covered the plan of selecting district winners through tournament competition, the Normal final winner was generally accepted from 1916 on as the logical state champion. Because of this general acceptance Lawrence College discontinued its tournament after 1918.

The first Normal state tournament was held at Milwaukee in 1916 with Fond du Lac the winner. In 1917 the finals were played at Menomonie with Eau Claire the winner. In 1918 Stevens Point staged the normal final and Madison Central won the title, while in 1919 La Crosse won at La Crosse.

Beginning with 1920 the W. I. A. A. took charge of all tournaments and while retaining the Normal schools as district centers



1924 STATE CHAMPIONS—FOND DU LAC HIGH SCHOOL
 Standing from left: Manager Royal; Johnson, guard; Adams, forward; Hutchins, sub.; Coach Fruth.
 Seated from left: Hayes, sub.; Moser forward; Captain De w, center; Sonn, forward; Wagner, guard.

placed the state tournament at the University in Madison. The winners at the University tournament from 1920 to 1924 have been as follows:

1920	Superior
1921	Appleton
1922	Fond du Lac
1923	University High—Madison
1924	Fond du Lac.

The W. I. A. A. has been in charge of Wisconsin high school tournaments since 1920. In that year, ten district tournaments were conducted and each Normal School was required to pay a sanction fee of \$15.00. This sum, together with the team entrance fee of \$1.00, constituted the only revenue to the W. I. A. A. from the district and state tournaments. In 1920 the teams at each district tournament were limited to eight reducing to some extent, the element of chance and also reducing the number of games necessary to determine the winner.

A ten team state tournament, however, did not prove satisfactory because of byes and also because of the fact that one of the finalists had to play two games on the last day while the other was required to play only one.

After much study by the Board of Control it was decided to have sixteen district tournaments with a sixteen team state final.

Some of the Normal Schools did not favor this plan but after considerable discussion it was put into operation in 1923. District tournaments were conducted during that season at:

Oshkosh Normal	Stout Institute
Lawrence College	Eau Claire Normal
Stevens Point Normal	Marquette University
Rhineland High School	Whitewater Normal
Two Rivers High School	LaCrosse Normal
Marinette High School	Platteville Normal
Ashland High School	Brodhead High School
River Falls Normal	Watertown High School.

The sixteen district plan with a final tournament at the University proved unusually successful and the Board of Control decided to continue the same plan for 1924.

The actual net profit of the sixteen district tournaments in 1923, according to reports made to the Board by the schools conducting the meets, was \$4982.46 with total receipts of \$17,229.33.

The W. I. A. A. did not profit by the 1923 tournaments other than through the sanction fees of \$15 per tournament center and the team entrance fee of \$1.00 or a total of \$368.00.

The Board made a study of the tournaments conducted in other states and at the beginning of the 1923-24 season decided upon the following financial plan for the basketball tournaments.

1. The schools conducting tournaments must guarantee the following:

- Hall rent.
- Awards—cost \$63 per center this year.
- Advertising, tickets, ticket takers, sellers, janitor service.
- Officials.
- Expense personal representative of the Board.
- Sanction fee of \$15.00.

2. After guaranteed expenses the money taken in was to be spent as follows:

- Each team allowed \$16.00 per day for hotel expenses.
- Each team to be allowed train fare for eight men; nearest railway distance.
- Balance divided equally between local school and W. I. A. A.

Two districts, namely, Stevens Point and Stout Institute, objected and Wisconsin Rapids and Rice Lake were selected as centers for 1924.

The total receipts for 1924 were \$20,251.47 with \$5845.76 the net profit. Of this sum the Board of Control received \$2924.24 while \$2921.52 remained with the local schools.

The following tabulated statement of the sixteen district tournaments shows that all made money. The wide range in expense will be studied and corrected by the Board for the coming year if possible.

Tournament	Receipts	Expenditure	Local School	W.I.A.A.
Wisconsin Rapids	\$ 1,946.75	\$ 1,006.31	\$ 470.22	\$ 470.22
Oshkosh	1,532.50	695.64	418.43	418.43
Whitewater	1,575.30	939.56	317.87	317.87
Platteville	1,441.40	930.67	255.36	255.37
Rice Lake	1,442.50	942.50	250.00	250.00
Milwaukee	1,279.75	916.39	181.68	181.68
River Falls	1,089.70	784.51	152.59	152.60
Two Rivers	1,143.40	833.04	155.53	155.53
Ashland	1,377.35	1,144.53	116.41	116.41
Brodhead	1,051.90	829.99	110.95	110.96
La Crosse	1,178.00	971.27	103.36	103.37
Marinette	890.50	689.29	100.60	100.61
Watertown	1,141.20	943.88	97.32	100.00
Rhineland	1,042.25	884.11	79.07	79.07
Appleton	1,028.22	900.78	63.72	63.72
Eau Claire	1,090.75	993.94	48.41	48.40
	\$20,251.47	\$14,405.71	\$ 2,921.52	\$ 2,924.24

The following is a detailed record of the different tournament results:

Wisconsin Rapids	
Stevens Point.....16	Greenwood 9
Medford.....29	Red Granite15
Nekoosa.....20	Granton12
Wisconsin Rapids.....25	Montello13
Red Granite29	Greenwood21
Montello31	Granton16
Stevens Point.....14	Medford13
Wisconsin Rapids.....16	Nekoosa14
Red Granite24	Montello15
Medford26	Nekoosa11
Medford29	Red Granite 3
Wisconsin Rapids.....14	Stevens Point11

Winner—Wisconsin Rapids.

Consolation

Wisconsin Rapids.....16	Arcadia14
Watertown19	Platteville16
Eagle River21	Rice Lake16
Wauwatosa.....19	Marinette13
Wisconsin Rapids.....21	Watertown7
Wauwatosa.....23	Eagle River20
Wauwatosa.....22	Wisconsin Rapids3

Consolation Winner—Wauwatosa**Championship**

Fond du Lac18	River Falls13
Appleton32	Manitowoc14
Oregon24	Janesville20
Superior28	LaCrosse25
Fond du Lac20	Appleton19
Superior24	Oregon12
Fond du Lac32	Superior20

State Champion—Fond du Lac

During 1923-24 over 350 Wisconsin high schools played basketball as against only 40 as in 1900. The Board of Control is now working on a plan under which it hopes to establish 32 district tournaments, with either four or eight sectional centers, and with a state tournament of eight schools. This plan will enable more schools to participate in tournaments and the Board believes will still further stimulate interest in Basketball.

Basketball will continue to develop. Public interest in the game will increase and the Board of Control is confident that the receipts this year will double those of 1923 if it is found possible to establish the 32 centers for this season.

With 16 centers only 128 schools could participate in the tournaments while under the 32 tournament plan 256 out of the 350 schools playing the game can participate.

The Board of Control is doing its best to bring this change about and a full report will soon be made to all member schools. Last year three independent tournaments, namely, those at Humbird, at Milton, and at Eagle River were sanctioned. Under the 32 tournament plan no other meets could or would be approved.

The large majority of Wisconsin high schools are now provided with a playing space for basketball. With the co-operation of all member schools basketball will develop in Wisconsin as it has in Indiana where the state tournament alone drew \$19,006.40. This tremendous sum was paid for with single admission tickets for 40c and season tickets at \$1.50.

P. F. NEVERMAN
Secretary.