



April 15, 2026

NFHS Baseball Weekly Rule Interpretations

Malicious contact occurs when a runner deliberately initiates forceful or unnecessary contact with a fielder who has the ball or is in the act of making a play. This action goes beyond incidental contact and is judged to be intentional and excessive in nature, often with disregard for the safety of the opponent.

When malicious contact is ruled, umpires should focus on the *intent and severity* of the contact—particularly actions such as lowering the shoulder, leading with elbows, or initiating a collision when a slide or avoidance was possible.

The overarching principle is player safety. Umpires are expected to address such actions decisively to maintain a safe and sportsmanlike environment.

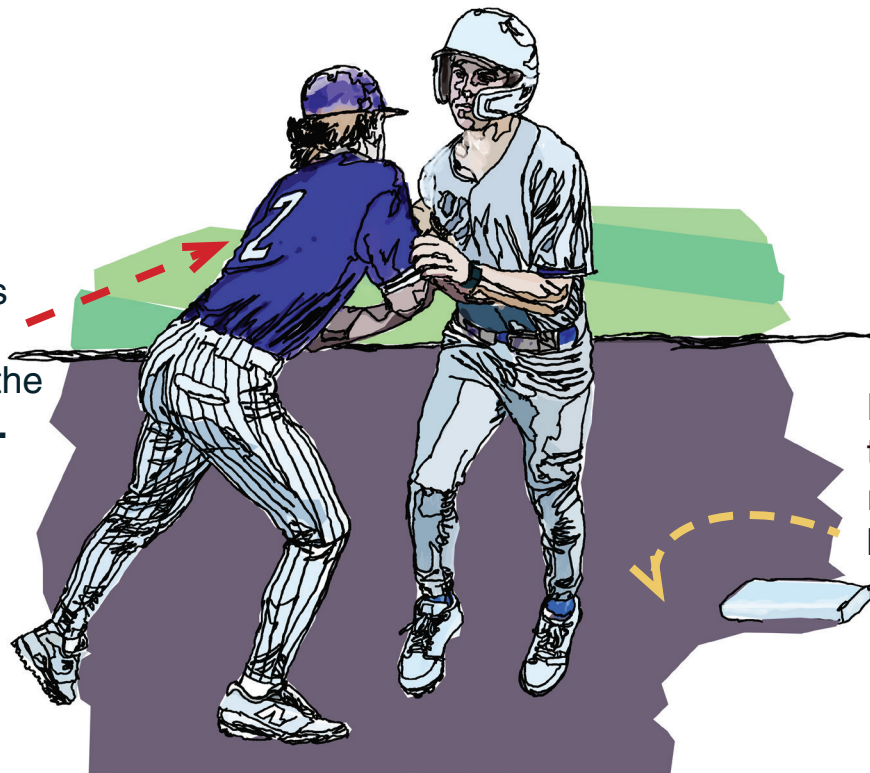
We trust this interpretation will be received as helpful, practical, and constructive.

For your convenience, we have attached the illustration as a combined document to support ease of use and distribution. These materials serve as excellent discussion tools for both first-year and veteran umpires alike.

Thank you for your continued support and professionalism throughout the season, and best wishes for a successful baseball season.

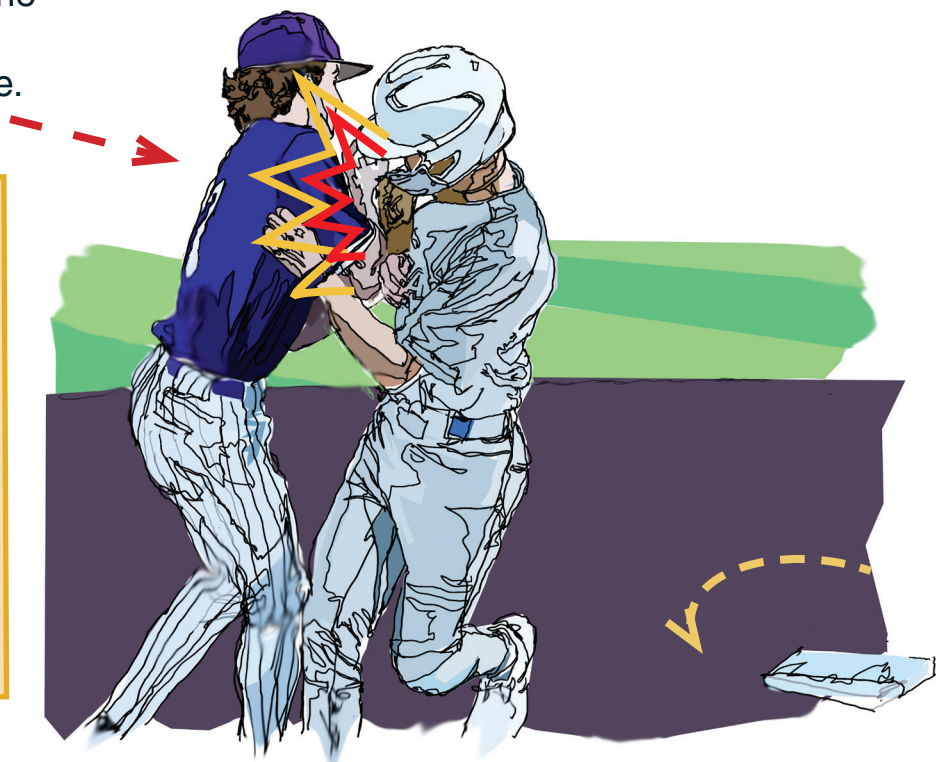
DEAD BALL FOUL (3-3-1m) Base Running Malicious Contact

As **R-1** touches third base, **F-6** moves toward the **Batter-Runner**.



Batter-Runner touches and rounds second base.

F-6 Maliciously contacts the **Batter-Runner** as he heads to Third base, and **R-1** heads to home.



Ruling: The ball is dead due to the malicious contact. **F6** is **ejected** from the game. Both **R1** and the **BR** will be awarded the bases that **U1** judges they would have obtained had the malicious contact not occurred. In this instance, **R1** will be awarded home and the **BR** will be awarded third base.

(3-3-1m Penalty)