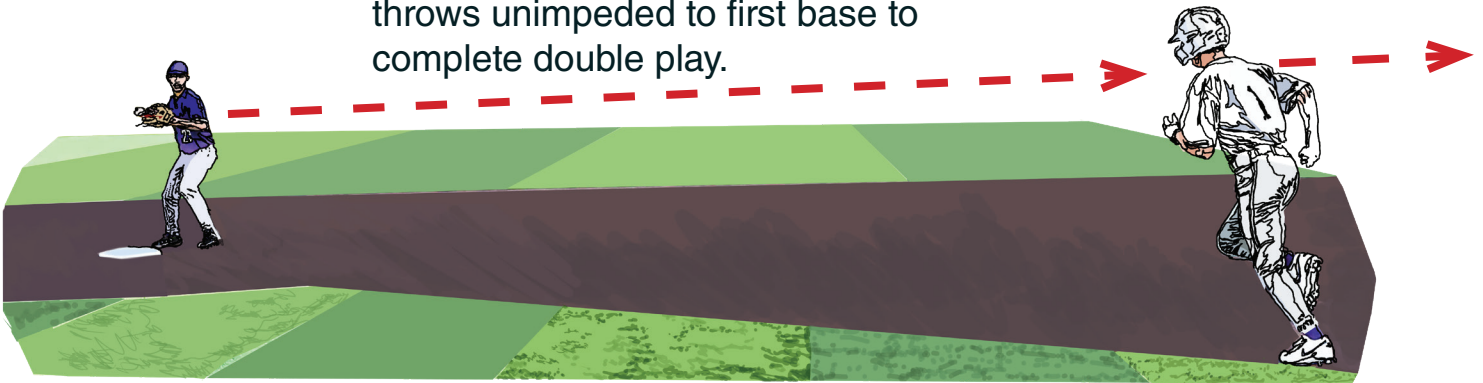


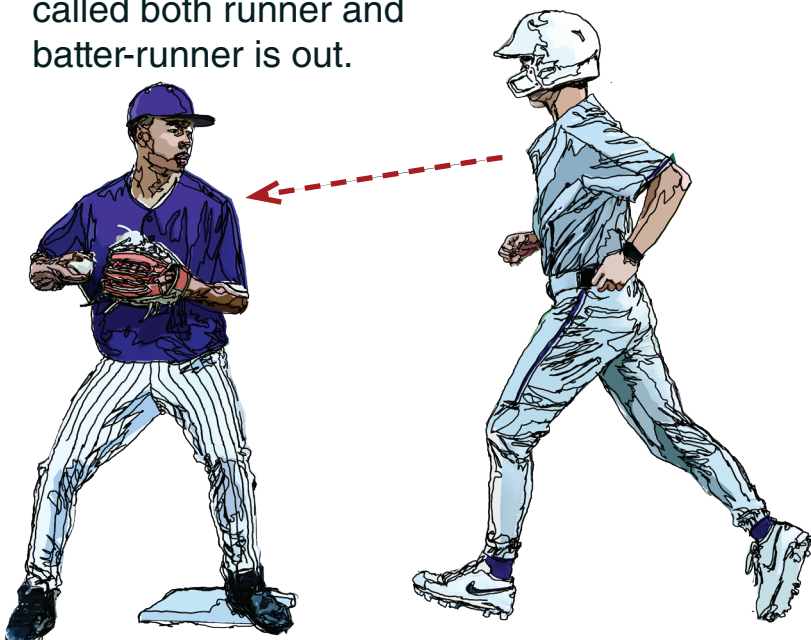
Forced Play Slide Rule (2-32-1; 8-4-2b)

R1 is running to second base but is some distance away. A ground ball is hit to the infield. **F4** has touched second base and is throwing to **F3** for the double play. **R1** is some distance from second base and is running standing up. Is he guilty of a force play slide violation? **Ruling:** No, **R1** has not violated the force play slide requirement because he is too far away to be sliding or turning away. He may run to second base standing up provided he does not move in a way that he might interfere with the throw from **F4**.

1. **F4** steps on second base and throws unimpeded to first base to complete double play.



2. **R-1** must move in direction away from **F4** to avoid contact or being struck by thrown ball. If contact is called both runner and batter-runner is out.



Ruling: In a force play slide situation (**while a runner is never required to slide**), if he chooses **not to slide**, he must “**give himself up**” and run to the side of the base in a direction away from the fielder to **avoid making contact or altering the play of the fielder**. If he goes to the **base standing up and makes contact with the fielder; gets hit by the thrown ball; or in any way alters the play**, he is out and the **batter-runner is also out**. The only time he might be able to go into the base standing up on a force situation is if the fielder is nowhere in the vicinity of the base.

(2-32-1; 8-4-2b)