

1971 Celebrating 50 YEARS of WIAA GIRLS TENNIS 2020



DIVISION 1 at  
*Lake Geneva Tennis Club*

Individual Tournament: October 15-17  
Team Tournament: October 24

DIVISION 2 at  
*Sports Core, Kohler*





BUILT WITH  
**CHOCOLATE MILK**

# RECOVER

## LIKE A CHAMPION

**NUTRIENTS TO REFUEL.  
NATURAL PROTEIN TO REBUILD.  
BACKED BY SCIENCE.**



**GET THE PROOF >**

**BuiltWithChocolateMilk.com**



official beverage of the WAA

**DAIRY FARMERS  
—OF—  
WISCONSIN**

© 2019 Dairy Farmers of Wisconsin

## Welcome to the 2020 Girls Tennis Culminating Event



Friends,

2020 has been a challenging year for all of us. It has been particularly challenging to our member schools and the students they serve. The fact that we are enjoying this culminating event in the 2020 girls tennis sport season is a tribute to the school leaders, athletic directors and coaches who have "willed" this to happen.

This event also serves as a tribute to the dedication, determination and resolve of the young people competing here today; as well as to all the high school athletes who have confronted the disappointments and frustrations of all that has engulfed them in recent months and have risen above every obstacle and adversity.

Lastly, we must recognize and thank all the parents and fans who have "masked-up", observed distancing and mitigating protocols in order to give kids, schools and coaches this chance to get back together, to compete in the sports and activities they love and have missed.

Thank you to all who have contributed in both great and small ways, because it has taken all of us to bounce back this far.

We have a way to go yet. But with your help and all of us continuing to work together, there can be hope!

Sincerely,

David J. Anderson  
Executive Director



## WIAA Provides Opportunities; Structure . . .

The Wisconsin Interscholastic Athletic Association (WIAA) is a voluntary, unincorporated, and nonprofit organization. The Association membership has a diversified membership of public high schools, nonpublic high schools, public middle schools, and nonpublic middle schools. Its purpose is to organize, develop, direct and provide interscholastic athletics for member schools.

There are 514 senior high schools affiliated with the WIAA. The estimated number of student-athletes in athletics is 80,000-85,000 annually.

Governance of the WIAA is performed by the member schools. Rules and policies of the Association are developed, promulgated and implemented by the membership either through membership vote for constitutional issues or through a membership-elected committee structure for sport seasons regulations. Therefore, ownership of the membership's rules and regulations, as well as the responsibility of compliance with them, lies with each member school.

## The Development of Rules . . .

As fans watch the games during the tournament, some wonder how the rules of the game and of the WIAA were created.

- ◆ The National Federation of State High School Associations is the authority of the competition rules for sport contests (i.e. uniforms, length of contest, game rules). As a member of the NFHS, the WIAA adheres to those rules as a member in good standing. The WIAA, as well as all state associations in the NFHS, has input with an advisory role in the review and promulgation of the playing rules. The NFHS office is located in Indianapolis, Indiana.
- ◆ For changes to the membership's Constitution, Bylaws and Rules of Eligibility, a vote of the entire membership is required at the Annual Meeting each spring. The Constitution contains information relating to the Association as an organization. The Bylaws encompass information relating to member high schools' responsibility concerning WIAA rules and regulations. The Rules of Eligibility embody information relating to the relationship of the student-athlete to the high school and the WIAA.
- ◆ The Board of Control has the ultimate authority in determining the outcome of sport seasons rule recommendations and regulations. Changes to the sport seasons regulations are advanced through the democratic committee structure. Among the advisory groups that provide input to the Board are the coaches advisory committees for each sport; the sports advisory committee, comprised of school athletic directors from each of the seven districts; the Advisory Council, consisting of school administrators from each elector district; and the executive staff. Other groups with advisory responsibilities include the Medical Advisory Committee, Sportsmanship Committee and the Officials Advisory Committee. The Season Regulations address, among other topics, definition of the sports seasons, participation, contest control and tournament procedures.

Currently, the Association sponsors 24 sports including baseball, basketball, cross country, 8-player, 11-player football, golf, hockey, soccer, swimming & diving, tennis, track & field, volleyball and wrestling for boys; and basketball, cross country, golf, gymnastics, hockey, soccer, softball, swimming & diving, tennis, track & field and volleyball for girls.





# Board of Control



Eric Russell  
Baldwin-Woodville  
President



Mike Beighley  
Whitehall



Willy Chambers  
Black Hawk



Phil Ertl  
Wauwatosa



Mike Humke  
Dodgeville



Karl Morrin  
Menominee Indian



Bernie Nikolay  
Cambridge



Paul Pedersen  
Regis



Dave Steavpack  
Manitowoc Lincoln



Jennifer Vogler  
Sturgeon Bay



Scott Winch  
Stratford

## Executive Office



Dave Anderson  
Executive Director



Wade Labecki  
Deputy Director



Tom Shafranski  
Assistant Director



Stephanie Hauser  
Assistant Director



Kate Peterson Abiad  
Assistant Director



Todd Clark  
Communications Director

## Advisory Council



Jim Brewer  
Clinton



Eric Coleman  
Milwaukee Public Schools



Greg Doverspike  
Durand-Arkansaw



Michael Endreas  
Spencer



Scott Fritz  
Howards Grove



Cari Guden  
Edgar



Matt Hendrickson  
Madison Memorial



Cory Hinkel  
Luck



Ted Knutson  
Aquinas



Cory Kulig  
Eleva-Strum



Kyle Luedtke  
Sevastopol



Chris Nelson  
Iola-Scandinavia



Craig Olson  
Hayward



Dan Retzki  
Green Bay Preble



Roger Rindo  
Oconomowoc



Brian Schlei  
Waukesha North



Terrance Slack  
Wisconsin Dells



Chris VanderHeyden  
Menasha

# 2020 State Girls Tennis Tournament



## 50th Individual Championship Schedule

### THURSDAY, OCTOBER 15

10:15 a.m. Matches Called  
10:30 a.m. Preliminary Matches

### FRIDAY, OCTOBER 16

8:45 a.m. Matches Called  
9 a.m. First Round, Second Round and  
Quarterfinal Matches

### SATURDAY, OCTOBER 17

8:15 a.m. Matches Called  
9 a.m. Consolation Semifinals  
Championship Semifinals – Singles  
Championship Semifinals – Doubles  
5th Place, 3rd Place and Championship Matches To  
Follow

Order of matches are shown by the numbers indicated for each match in the graphic format of singles and doubles on pages 8-13 of this program.

## 27th Team Championship Schedule

(Matches called 15 minutes prior to start times noted below.)

All photos courtesy of VIP

Results available on WIAA website [www.wiaawi.org](http://www.wiaawi.org)

### DIVISION 1 – Lake Geneva Tennis Club

#### #1 Divine Savior Holy Angels (13-2)

Saturday, October 24 – 9 a.m.

#### #4 Hudson (10-0)

#### #2 Muskego (12-3)

Saturday, October 24 – noon

#### #3 Oconomowoc (14-4)

Saturday, October 24  
3 p.m.

**2020  
STATE CHAMPION**

### Awards Presentation

At the conclusion of the  
tournament, awards will be  
available at the  
registration table.



@wiaawi  
@wiaawistate  
#wiaatennis



wiaawi



wiaawis

### DIVISION 2 – Sports Core – Kohler

#### #1 Catholic Memorial (11-8)

Saturday, October 24 – 9 a.m.

#### #4 Edgewood Sacred Heart (3-3)

#### #2 Xavier (7-0)

Saturday, October 24 – 11 a.m.

#### #3 Amery (12-3)\*

Saturday, October 24  
1:30 p.m.

**2020  
STATE CHAMPION**

\* Regis voluntarily withdrew

The WIAA requires good sportsmanship at education-based sporting events.

Attendance at interscholastic activities is a privilege with the expectation to exhibit positive and respectful behavior. For the enjoyment and respect of all in attendance, your cooperation in demonstrating the high ideals of sportsmanship is expected and greatly appreciated.



A central photograph shows a woman with dark hair and a determined expression, looking through a chain-link fence. She is holding a tennis racket with both hands, its head resting against the fence. The background behind her is a blurred city street. The entire scene is framed by a larger, semi-transparent image of a tennis net with red and black mesh.

# CLASH IS CONFIDENCE

ON-COURT CONFIDENCE IS ABOVE ALL ELSE. CLASH INSTILLS THAT  
CONFIDENCE WITH A PLAYING EXPERIENCE LIKE NO OTHER.  
THE ONLY WAY TO FIND OUT? TRY IT.

[THERACKETREVOLUTION.COM](http://THERACKETREVOLUTION.COM)



## Qualifying Procedures

In 2020, 149 schools are sponsoring girls tennis. Of the 149, 85 schools are placed in Division 1 and the remaining 64 are placed in Division 2. This is the 27th year for competition in two divisions.

### Individual Tournament

Participants who finished first through fourth in Flight 1 singles and doubles and first in Flight 2 singles and doubles in sectional competition qualified automatically for the 2020 WIAA Individual Tennis Tournament. Twelve additional singles and doubles teams were chosen by the state seeding committee in Division 1 and eight additional singles and doubles teams in Division 2.

A total of 40 singles players and doubles teams will participate in Division 1. Twenty-eight singles and doubles teams will be participating in Division 2. Medals will be presented to the top six finishers in singles and doubles in each division following the completion of play on Saturday.

Subsectional and sectional tournaments provided both individual qualifiers for this tournament and provided the teams for next week's team tournament. Teams who won their sectional, by scoring the most points through subsectionals and sectionals, will participate in the State Team Tournament to be held next weekend at Lake Geneva Tennis Club and Sports Core - Kohler on Saturday, October 24.

### Team Tournament

Teams who finished first in one of four Division 1 and four Division 2 sectionals are competing in the 27th WIAA State Team Tennis tournament this weekend. Teams scored points through subsectional and sectional play on October 5-8.

Teams were allowed to enter a total of 10 players at the subsectional level in this year's flighted tournament. Four flights of singles and three flights of doubles have enabled more athletes to participate in the WIAA tennis tournament program. Previously, schools were allowed to enter only two singles players and two doubles teams. The addition of flights has allowed coaches to include their regular season players into the tournament structure.

Teams will be playing dual meets to determine who will advance to the championship round. The team scoring the most individual flight wins will advance to the next level of competition. The order of play at the State Team Tennis Tournament will be: #4 Singles, #3 Doubles, #3 Singles, #2 Doubles, #2 Singles, #1 Doubles, #1 Singles. The brackets were designed via a seeding meeting with all the participating coaches.

Awards will be available following the completion of the championship matches on Saturday afternoon. Medals and trophies will be available to both teams competing in the championship match, in each division.



**ANDERSON O'BRIEN**  
BERTZ, SKRENES & GOLLA, LLP ATTORNEYS SINCE 1886



**Accident & Personal Injury**  
**Banking & Commercial Law**  
**Business & Corporate Law**  
**Divorce & Family Law**  
**Elder Law & Guardianships**  
**Employment & Labor Law**

**Litigation & Dispute Resolution**  
**Probate & Trust Settlements**  
**Real Estate**  
**Tax Planning**  
**Wills, Trusts, & Estate Planning**  
**Workers' Compensation**

**715-344-0890 | andlaw.com**  
1257 Main Street, Stevens Point, WI 54481

### Tennis Coaches Advisory Committee

Lindsay Matuszewski, Bay Port

Jim Matousek, Brown Deer

Jim Litscher, Eau Claire Memorial

Ryan Reischel, Madison West & Sun Prairie

Kyle Seyer, Regis

Andy Andress, Hartford Union (Coaches Association Representative)

### Girls State Seeding Committee

#### Division 1

Rachel Benn, West De Pere

Tim Koppa, Nicolet

Paul Lauterbach, Badger

Linda Lied, Brookfield East

#### Division 2

Greg Emerson, Altoona

Dave Lindow, East Troy

Brad Hoffmann, Kohler

Jake Bucki, Medford



## Tournament Personnel



**WIAA  
Tournament  
Manager**  
Tom Shafranski

### Division 1 – Lake Geneva Tennis Club

**Meet Manager** – Jim Kluge

Rose Dolatowski

**Meet Referee** – Sharon Terry

### Division 2 – Sports Core – Kohler

**Meet Manager** – Lindsay Matuszewski

Bob Feller

**Meet Referee** – Liz Danner

### Umpires

Anthony Asta, Williams Bay

Matt Bauman, Madison

Elizabeth Danner, Oneida

Coskin Fink, Madison

Janet Graf, De Pere

Jon Nicoud, Fond du Lac

David Shorr, Stevens Point

John Shanahan, Sturgeon Bay

Sharon Terry, Janesville

Mark Vander Zanden, Appleton

Adriane Welker, Elgin (IL)

Kris Williams, Green Bay





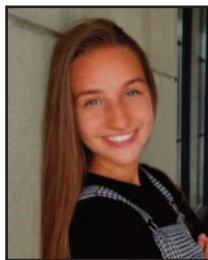
## 2019 Champions



**Jordan Schifano**  
Divine Savior  
Holy Angels  
Division 1 - Singles



**Cecile Fuchs  
DeForest**  
Division 1 - Doubles



**Samantha Fuchs  
DeForest**  
Division 1 - Doubles



**Baluck Deang**  
Edgewood Sacred Heart  
Division 2 - Singles



**Ellie Macksood  
Xavier**  
Division 2 - Doubles

**Erika Curtin  
Xavier**  
Division 2 - Doubles



### HOMESTEAD – GIRLS TENNIS CHAMPIONS (DIVISION 1) – 2019-2020

From left to right, front row, Jillian Diamond, Tess Diamond, Natalie Yang; second row, Ashley Chavin, Sasha Shapsis, Anastasia Raykova, Cameron Lindsay, Kate Wade, Jamie Gebhardt; third row, Head Coach Jackie Egelhoff, Anna Head, Bridget Brown, Ellie Sprinkmann, Assistant Coach Peter Sprinkmann.



### CATHOLIC MEMORIAL – GIRLS TENNIS CHAMPIONS (DIVISION 2) – 2019-2020

From left to right, front row, Emily Dorow, Courtney Sturm, Mia Rossi, Jeslyn Singson; second row, Kiah Nepal, Alexandria Sturm, Megan Prah, Alice McCaffery, Melanie Rossi; third row, Chris Benyousky, Claire Pawlak, Reagan Rebholz, Lauren Carson, Rylee Teuteberg, Jeff Mrochinski.



## 2020 WIAA Scholar Athlete Award Testimonials

### Alec Martzahl, Kimberly H.S. – 3.88 GPA

One lesson high school athletics has taught me is persistence. I believe it's one of the keys to being a successful adult. Don't give up on yourself. Work hard for what you want no matter what life throws at you...None of my success would have been possible if I wasn't persistent. I could have quit or given up because of a few hardships, but I didn't. Life is 10 percent what happens to you and 90 percent how you react to it. I believe that if you respond well to situations you have no control over, you can persevere and be successful in life.

### Alex Vance, Oconomowoc H.S. – 4.0 GPA

One of the greatest lessons I have learned throughout my academic and athletic experiences in high school has been the idea of getting out exactly what is put in. Spending extra time studying yielded higher scores and better engagement. Any degree of success is possible when enough work is put in to get there. It is a simple idea, but undoubtedly one of the most valuable lessons I've learned, and certainly one that will stay with me as I move on from high school.

### Charlie Stuhl, Ellsworth H.S. – 3.64 GPA

Throughout my high school career I have learned many lessons from both athletics and from school. One of the most important lessons I've learned is being accountable. It is one of the most important to me because it is a life-long lesson that will benefit me in all areas of my life. Being accountable is important in so many ways, but most importantly it shows your peers that you are reliable and you can live up to commitments. One lesson that I'm very thankful I learned is...to take the advice you are given because you're never "too good" or "too smart" to stop improving yourself. Lessons become important when we incorporate them into our lives and we become better people because of what we learned from those that inspire us.

### Skylar White, River Ridge H.S. – 4.0 GPA

I've learned through my athletic and academic experiences that communication and balancing time play very important roles in life. Being able to communicate and work together as a team to achieve a common goal is what can make you stand apart from the rest. Communication is a key to being a good leader. Sports have shown me how to stay focused on the court and in the classroom. As much as I do between school and sports, I also have kept time for some fun with family and friends. I believe my busy schedule will prepare me for life after college.

### Linzey Sendelbach, Arcadia H.S. – 4.0 GPA

One of my favorite lessons learned through sports and academics is being able to work with many different types of people. With team sports and group projects, I had to adapt to the different personalities and find the best way for us to work together. As years went by, it got a lot easier. Another great lesson I learned was leadership. I have grown more confident in stepping up into a leadership role whether it's in the classroom or on the court/field. I've learned how to connect with my teammates or group mates. Everyone interacts different, and through sports specifically, I have picked up on the different ways to connect with people.

### Anne Dotzler, Waunakee H.S. – 4.0 GPA

The greatest lesson I have learned in my high school career is that it is so important to have a positive mindset, no matter the circumstances. On the court and field, I found success in focusing on my effort and energy at every practice, as these were the only things I could control. My greatest take away from high school sports is to make the choice to put my team before myself by giving off energy to others. I will be able to apply this mindset to every situation that I encounter in my future. I am so grateful to have had the opportunity to learn these lessons throughout high school.





# State Preview

**DIVISION 1 SINGLES NOTES:** The field is reduced to 40 because of COVID-19 accommodations and season declaration options that reduced the number of teams sponsored in the fall. Senior Autumn Bruno of Whitnall is the top seed with an 18-0 record. The four-time qualifier finished sixth last season after advancing to the quarterfinal round in 2018 and placing fourth as a freshman in 2017. Junior Elizabeth Sobieski of Muskego is the #2 seed with a 20-1 record. She qualifies for the third straight season after advancing to the quarterfinals last year and falling in her opening-round match in 2018. Freshman Carolyn Schaefer of Divine Savior Holy Angels has been issued the #3 seed with her 23-1 record this season. Senior Samantha Fuchs of DeForest qualifies as the #4 seed with a 12-0 record after winning the doubles championship last year. She qualified in doubles play in each of her three previous seasons. Prior to earning the title last season, she advanced to the third round in 2018 and to the second round in 2017. Last year's runner-up Zaya Iderzul, a junior from Badger, qualifies for the third time. She is the #5 seed with a 16-1 record this season. Iderzul advanced to the third round as a freshman in 2018. Senior Natasha Bailey of Wausau West, a four-time qualifier, is the sixth seed with an 8-0 mark this season. She placed fifth last season after advancing to the third round in 2018 and to the second round in 2017. Senior Jenna Dundas joins Bruno to give Whitnall two qualifiers among the top seven seeds. Dundas enters the tournament with an 18-0 mark as the seventh seed. She also qualified the past two seasons and is looking to advance out of the first round for the first time. Rounding out the top-10 seeds are junior Christina Pan of Muskego at #8 with a 20-2 record, junior Molly Asfeld of Waukesha West at #9 with an 18-3 mark, and junior Maggie Krill of Brookfield East at #10 with a 17-5 tally this season.

**DIVISION 1 DOUBLES NOTES:** The field is reduced to 40 because of COVID-19 accommodations and season declaration options that reduced the number of teams sponsored in the fall. Senior Kate Wade and junior Ellie Sprinkmann of Homestead are the top seed with an unblemished 28-0 record. Both placed in the top five last season with different partners. Wade finished third a year ago. She also was half the combination that placed sixth in 2018 and advanced to the third round in 2017. Sprinkmann placed fifth last season. Seniors Aubrey Berther and Sarah Kopfer of Oconomowoc qualify as a tandem for the second time. They advanced to the quarterfinals last season. They are the #2 seed this season with a 14-0 record. Senior Anna Long and sophomore Hannah Cady of Arrowhead are the third seed with a 12-3 record. They both qualified last season with different partners. Cady was half the duo that finished sixth, and Long advanced to the third round. The Franklin tandem of senior Sophia Dekker and junior Madelyn Dziubek remain intact after qualifying last season and advancing to the third round. They enter play this week as the fourth seed with an 18-3 record. The fifth seed is senior Megan Lambrecht-Scasny and junior Lauren Sobieski of Muskego with a 16-4 record. Sobieski is a three-time qualifier. She placed fourth with a different partner a year ago, she qualified in singles play in 2018. Lambrecht qualified and lost in the first round with a different partner last season. The sixth seed is seniors Itu Igoni and Maddy Buckley of Nicolet with a record of 23-8. Igoni gained tourney experience in 2018 when she qualified in doubles play with a different partner. Seniors Delanie Dahn and Kate Spielbauer of Divine Savior Holy Angels qualify as the #7 seed. They have compiled an 11-9 mark this season. Senior Halle Rosentreter and sophomore Gwen Hammond of Wilmet Union are the eighth seed with a 7-2 record, and senior Emma Lo and junior Therese Raster of Brookfield East are seeded ninth with an 11-5 record. Lo gained tourney experience last season qualifying in singles play. Juniors Abby Osterman and Jean Marie Lorentz of Kimberly return to the tournament with the #10 seed with an 11-1 record after qualifying last season and falling in their first-round match.

**DIVISION 2 SINGLES NOTES:** The field is reduced to 28 because of COVID-19 accommodations and season declaration options that reduced the number of teams sponsored in the fall. Defending champion Baluck Deang, a senior from Edgewood, is the top seed with a 9-1 record this season. She is a four-

time qualifier. She also finished fourth in 2018 after advancing to the third round as a freshman in 2017. Senior Erika Curtin of Xavier is seeded second with an 11-0 record. She has a wealth of State experience, winning the doubles championship last year. Curtin advanced to the third round in singles play in 2018 and placed fourth in doubles in 2017. Sophomore Lauren Lindow of East Troy is the third seed after qualifying last year and advancing to the second round. She enters play this week with a 12-0 mark on this season. Senior Lauren Carson of Catholic Memorial, the fourth seed, qualifies for the fourth time. She placed third a year ago, fifth in 2018 and advanced to the second round in 2017. Carson has posted a 13-2 mark this season. Senior Fiona O'Flaherty of Aquinas is the fifth seed with a 15-1 record. She has qualified the past two seasons and has advanced to the second round on both occasions. Junior Emily Gauger of Big Foot/Williams Bay has been given the sixth seed with an 18-2 record. The #7 seed is senior Morgan Dekan of Altoona, who has compiled a 20-2 tally this season. She qualified last season and advanced to the second round. Senior Kate Smith of Racine St. Catherine's/Racine Lutheran is the eighth seed with a record of 15-2. She qualified last year and advanced to the second round.

**DIVISION 2 DOUBLES NOTES:** The field is reduced to 28 because of COVID-19 accommodations and season declaration options that reduced the number of teams sponsored in the fall. Senior Kala Siddalingaiah and junior Rebecca Daskal of the University School of Milwaukee are awarded the top seed. They enter the tourney with a 15-2 record after qualifying the past two seasons. They advanced to the second round on both those occasions. Senior Ava Hoffmann and junior Lily Montes of Kohler are the second seed with a 21-4 mark. Both have State experience, having advanced to the second round with different partners in 2019. Seniors Cassie Warren and Sarah Hoffe of Luther are the #3 seed with their record of 9-0. Hoffe gained State experience last season having qualified in singles play. Seniors Jada Brunkow and Phoebe Jerome of Barron have qualified as a duo for the third straight season and seek to advance past the first round for the first time. They have been issued the fourth seed with a 17-1 record. Seniors Abi Knox and Natasha Davis of Shorewood are seeded fifth with a 12-5 mark this year, and juniors Emily Dorow and Jeslyn Singson of Catholic Memorial are the sixth seed with a 7-5 record. Dorow gained State experience by qualifying in singles play last season. Seniors Kylie McCormick and Bella Taleon of Xavier are the #7 seed this season, possessing a 10-2 record. McCormick advanced to the third round of doubles play with a different partner in 2019. The 10th-seeded tandem is juniors Eve Janavitz and Jaqueline Krohn of Brookfield Academy with a 5-3 record.

**ABOUT THE DIVISION 1 TEAM FIELD:** **Divine Savior Holy Angels** is the top seed in the bracket. The Dashers qualify for the ninth time and for the second time in the past three years. They won the title in their first two appearances in 2001 and 2004. They have been runner-up twice since that time, in 2012 and 2018. **Muskego** finished runner-up in its first State Tournament appearance last season. They Warriors have been issued the #2 seed this season. Third-seeded **Oconomowoc** qualifies for the tournament for the third time and for the first time since back-to-back appearances in 1994 and 1995. In each of the prior two appearances, the Raccoons fell in the quarterfinal round. **Hudson** is making its first appearance in the State Tournament.

**ABOUT THE DIVISION 2 TEAM FIELD:** Defending champion **Catholic Memorial** is the top seed. It's the third year in a row the Crusaders have qualified, which accounts for its overall total of appearances. They finished runner-up in their first appearance in 2018. Second-seeded **Xavier** will be embarking on its first-ever appearance in the State Team Tournament. Regis, the third seed, voluntarily withdrew from the tournament. **Amery**, the most recently defeated opponent, replaced Regis in the bracket. The Warriors are participating at State for the third time. They had back-to-back appearances in 2017 and 2018, which resulted in defeats in the semifinals. **Edgewood** is making its 12th appearance at State and its first since 2018. The Crusaders won the Division 2 championship in 2013, 2015 and 2016. They also have four runner-up finishes on their ledger. Those coming in 2004, 2010, 2012 and again in 2014.

**2021 WIAA State Girls Individual Tennis Tournament Dates – October 14-16, 2021**  
**2021 WIAA State Girls Team Tennis Tournament Dates – October 22-23, 2021**

# DIVISION 1 - SINGLES

Please check [tennisreporting.com](http://tennisreporting.com) for all unlisted match times.  
All singles matches played at Lake Geneva Tennis Club.

1. Autumn Bruno (12) Whitnall (18-0)

2. BYE

3. Lily Holmberg (10) Hudson (12-1)

4. Grace Reimers (11) Whitefish Bay (18-5) 1 Thurs. 10:30 a.m.

5. \* Maggie Mirsberger (11) Franklin (15-4)

6. BYE

7. \* Ava Andrae (9) Cedarburg (11-9)

8.

9. Christina Pan (11) Muskego (20-2)

10. BYE

11. \* Aaditi Tiwari (12) Brookfield Central (15-13)

12. \* Cadence Thomson (11) Tomah (9-4) 2 Thurs. 10:30 a.m.

13. Molly Asfeld (11) Waukesha West (18-3)

14. BYE

15. \* Katarina Zrnica (9) Greendale (14-4)

16.

17. Samantha Fuchs (12) DeForest (12-0)

18. BYE

19. \* Lainy Ristau (10) Kenosha Indian Trail (9-3)

20. \* Mana Usui (9) Franklin (13-6) 3 Thurs. 10:30 a.m.

21. \* Addison Young (9) Pewaukee (14-5)

22.

23. Grace Kiefer (11) Kimberly (9-4)

24. Zaya Iderzul (11) Badger (16-1)

25. BYE

26. \* Maggie Kasdorf (12) Wauwatosa East (14-9)

27. Cynthia Yan (12) Hamilton (16-5) 4 Thurs. 10:30 a.m.

28.

29. Haley Hastings (12) Menomonie (9-9)

30. BYE

31.

32. Sophia Jonas (12) Hudson (12-1)

A. Bruno

9 Thurs.

25 Fri. 9 a.m.

M. Mirsberger

10 Thurs.

A. Andrae

33 Fri.

C. Pan

11 Thurs.

26 Fri. 9 a.m.

M. Asfeld

12 Thurs.

K. Zrnica

37 Sat. 9 a.m.

S. Fuchs

13 Thurs.

27 Fri. 9 a.m.

A. Young

14 Thurs.

G. Kiefer

34 Fri.

Z. Iderzul

15 Thurs.

28 Fri. 9 a.m.

H. Hastings

16 Thurs.

S. Jonas

43

2020  
Champion

## SEEDED PLAYERS

1. Autumn Bruno, Whitnall
2. Elizabeth Sobieski, Muskego
3. Carolyn Schaefer, Divine Savior Holy Angels
4. Samantha Fuchs, DeForest
5. Zaya Iderzul, Badger
6. Natasha Bailey, Wausau West
7. Jenna Dundas, Whitnall
8. Christine Pan, Muskego
9. Molly Asfeld, Waukesha West
10. Maggie Krill, Brookfield East

\* Special Qualifiers





Please check tennisreporting.com for all unlisted match times.		
33.	Claire Jaeger (9) Waunakee (13-0)	C. Jaeger
34.	BYE	
35.	Alex Moews (11) Divine Savior Holy Angels (20-3)	17 Thurs. A. Moews
36.	Aubrey Schmutzler (12) Watertown (12-5)	
37.	Izzy Brinkman (10) New Richmond (14-8)	5 Thurs. 10:30 a.m.
38.	BYE	
39.	Natasha Bailey (12) Wausau West (8-0)	18 Thurs. N. Bailey
40.	Emily Pan (9) Muskego (24-0)	
41.	BYE	
42.	Zoe Goeldner (11) Oconomowoc (14-9)	
43.	Ella Sabnis (11) Nicolet (11-19)	19 Thurs. Z. Goeldner
44.	Alle Lewis (10) Mukwonago (13-11)	
45.	BYE	
46.	Carolyn Schaefer (9) Divine Savior Holy Angels (23-1)	20 Thurs. C. Schaefer
47.	Ameila Ansay (10) Nicolet (25-8)	
48.	BYE	
49.	Maggie Krill (11) Brookfield East (17-5)	21 Thurs. M. Krill
50.	Kacie O'Hearn (12) Slinger (12-3)	
51.	Olivia Eckes (12) Whitefish Bay (22-2)	
52.	BYE	
53.	Jenna Dundas (12) Whitnall (18-0)	22 Thurs. D. Dundas
54.	Sarah Ferguson (12) Oak Creek (14-6)	
55.	BYE	
56.	Alex Schmoldt (11) Slinger (17-9)	
57.	Alexis Kloth (9) Wausau West (7-0)	
58.	Tristin Jantz (11) Westosha Central (12-4)	
59.	BYE	
60.	Elizabeth Sobieski (11) Muskego (20-1)	24 Thurs. E. Sobieski
61.		
62.		
63.		
64.		

# DIVISION 1 - DOUBLES

Please check [tennisreporting.com](http://tennisreporting.com) for all unlisted match times.  
All doubles matches played at Badger High School as long as weather conditions allow.

## SEEDED PLAYERS

1. Wade/Sprinkmann, Homestead
2. Berther/Kopfer, Oconomowoc
3. Cady/Long, Arrowhead
4. Dekker/Dziubek, Franklin
5. Lambrecht-Scasny/Sobieski, Muskego
6. Igoni/Buckley, Nicolet
7. Dahm/Spielbauer, Divine Savior Holy Angels
8. Rosentreter/Hammond, Wilmet Union
9. Lo/Raster, Brookfield East
10. Osterman/Lorentz, Kimberly

\* Special Qualifiers

(Match times are approximate – players should report a minimum of 20 minutes prior to the listed time.)

1. Kate Wade (12) Ellie Sprinkmann (11) Homestead (28-0)	Wade/Sprinkmann	9 Thurs.	25 Fri. 9 a.m.	33 Fri.	37 Sat. 9 a.m.
2. BYE					
3. * Caroline Van Bell (12) Bryn Gonzales (9) Whitefish Bay (19-3)					
4. * Olivia Champagne (12) Kristina Stojadinovic (12) Oak Creek (8-6)	1 Thurs. 10:30 a.m.				
5.					
6. * Deirdre Martin (12) Jenna Hausman (12) Tomah (9-4)	Martin/Hausman	10 Thurs.			
7. Ellie Preboski (12) Elli Stank (10) Antigo (10-1)	Preboski/Stank				
8.					
9. Halle Rosentreter (12) Gwen Hammond (10) Wilmet Union (7-2)	Rosentreter/Hammond	11 Thurs.	26 Fri. 9 a.m.		
10. BYE					
11. * Alexandra Wells (11) Emily Wermeling (12) Westosha Central (12-2)					
12. Emily Martin (12) Julia Cyganiak (12) Divine Savior Holy Angels (19-0)	2 Thurs. 10:30 a.m.				
13. Emma Lo (12) Therese Raster (11) Brookfield East (11-5)	Lo/Raster	12 Thurs.			
14. BYE					
15. Katie Meyer (11) Anika Eder (11) Wausau West (7-1)	Meyer/Eder				
16.					
17. Sophia Dekker (12) Madelyn Dziubek (11) Franklin (18-3)	Dekker/Dziubek	13 Thurs.			
18. BYE					
19. * Natasa Pupovac (10) Katrina Briselden (12) Greendale (4-3)					
20. Casie Li (12) Amie Li (12) Brookfield Central (12-18)	3 Thurs. 10:30 a.m.				
21. * Kailey Trudell (12) Maddi DeBoth (10) Mukwonago (8-9)	Trudell/DeBoth	27 Fri. 9 a.m.			
22.					
23. Abby Miller (12) Sam Rifeij (12) Brookfield East (9-3)	Miller/Rifeij	14 Thurs.			
24.					
25. Megan Lambrecht-Scasny (12) Lauren Sobieski (11) Muskego (16-4)	Scasny/Sobieski	15 Thurs.	34 Fri.		
26. BYE					
27. * Maia Samuelson (10) Ava Mayer (10) New Berlin Eisenhower (13-5)					
28. * Chloe Zabel (12) Makayla Counsell (11) Waukesha West (11-7)	4 Thurs. 10:30 a.m.				
29.					
30. Ava Rawlings (12) Mallory Ritzman (12) Badger (0-0)	Rawlings/Ritzman	16 Thurs.	28 Fri. 9 a.m.		
31.					
32. Kira Young (11) Grace Lewis (10) Hudson (13-0)	Young/Lewis				
					43

2020  
Champion



Please check [tennisreporting.com](http://tennisreporting.com) for all unlisted match times.

**All doubles matches played at Badger High School as long as weather conditions allow.**

The diagram illustrates a tournament bracket for the 2023-2024 season. It features 64 participants, numbered 33 through 96, competing in a series of rounds. The bracket is organized into two main halves, each leading to a 'Third Place' and 'Fifth Place' match. The 'Third Place' match is between the winners of the 33-48 bracket and the 49-64 bracket. The 'Fifth Place' match is between the winners of the 49-64 bracket and the 65-80 bracket. The diagram includes dates and times for each round, as well as the names of the participants and their opponents.

**Participants and Opponents:**

- 33. Isabella Myers (11) Lexi Morgan (12) Arrowhead (10-2)
- 34. Myers/Morgan
- 35. \* Lexi Opsahl (11) Danielle Rogers (11) Waunakee (0-0)
- 36. Opsahl/Rogers
- 37. \* Ellaya Kucharski (12) Lauren Mrotek (12) Cedarburg (17-5)
- 38. Brogan O'Flanagan (11) Rhea Warner (11) New Richmond (14-4)
- 39. BYE
- 40. **Itu Igoni (12) Maddy Buckley (12) Nicolet (23-8)**
- 41. Sara Sowinski (12) Gretchen Lee (10) Waunakee (3-1)
- 42. Sowinski/Lee
- 43. \* Kaitlyn Huebner (12) Maddie Blanchard (10) Kettle Moraine (8-3)
- 44. Huebner/Blanchard
- 45. \* Kephely Igoni (11) Emma Kappel (10) Nicolet (23-12)
- 46. \* Ava Murawski (11) Srisupraja Kandrakola (11) Kenosha Indian Trail (7-2)
- 47. BYE
- 48. **Hannah Cady (10) Anna Long (12) Arrowhead (12-3)**
- 49. Brooke Evan (12) Lindsey Kaufman (12) Menomonie (8-8)
- 50. Evan/Kaufman
- 51. Osterman/Lorentz
- 52. **Abby Osterman (11) Jean Marie Lorentz (11) Kimberly (11-1)**
- 53. Elle Edwards (12) Brooke Ellestad (12) Kimberly (11-1)
- 54. \* Carly O'Leary (10) Zoe Larson (10) Cedarburg (11-6)
- 55. BYE
- 56. **Delanie Dahm (12) Kate Spielbauer (12) Divine Savior Holy Angels (11-9)**
- 57. Megan Griswald (11) Molly Schlosser (12) Oconomowoc (10-5)
- 58. Griswald/Schlosser
- 59. \* Jordan Yacoub (11) Livi Boily (12) Hudson (12-2)
- 60. Yacoub/Boily
- 61. Paige Plemel (11) Emma Smith (12) Whitefish Bay (14-7)
- 62. \* Tess Diamond (11) Jillian Diamond (11) Homestead (15-10)
- 63. BYE
- 64. **Aubrey Berther (12) Sarah Kopfer (12) Oconomowoc (14-0)**
- 65. Berther/Kopfer

**Round Dates and Times:**

- 17 Thurs. 9 a.m.
- 18 Thurs. 9 a.m.
- 19 Thurs. 9 a.m.
- 20 Thurs. 9 a.m.
- 21 Thurs. 9 a.m.
- 22 Thurs. 9 a.m.
- 23 Thurs. 9 a.m.
- 24 Thurs. 9 a.m.
- 29 Fri. 9 a.m.
- 30 Fri. 9 a.m.
- 31 Fri. 9 a.m.
- 32 Fri. 9 a.m.
- 35 Fri. 9 a.m.
- 36 Fri. 9 a.m.
- 38 Sat. 9 a.m.
- 39 Sat. 9 a.m.
- 40 Sat. 9 a.m.
- 41 Sat. 9 a.m.

**Place Matches:**

- Third Place**
- Fifth Place**

# DIVISION 2 - SINGLES

First time listed – if indoor & outdoor courts used.  
Second time listed – if only indoor courts used.

1. **Baluck Deang (12) Edgewood Sacred Heart (9-1)**

2. BYE

3. \* Alethia Schmidt (12) Watertown Luther Prep (9-6)

4. Jameson Gregory (10) Big Foot/Williams Bay (21-1)

5. **Kate Smith (12) Racine Saint Catherine's/Racine Lutheran (15-2)**

6. Sophie Whitley (12) Amery (13-5)

7. \* Alysa Patten (12) Waupun (9-2)

8. \* Alexa Robarge (12) Rice Lake (8-8)

9. **Lauren Carson (12) Catholic Memorial (13-2)**

10. BYE

11. \* Maahum Jan (12) University School of Milwaukee (10-6)

12. Brooke Sommer (12) Medford (8-7)

13. **Fiona O'Flaherty (12) Aquinas (15-1)**

14. Arianna Smith (12) Regis (14-7)

15. Anna VandenAcker (11) Saint Mary Catholic (9-7)

16. Hannah Bottolfson (12) Amery (15-1)

17. Becky Larrain (11) Newman Catholic (12-1)

18. Danica Silcox (9) Aquinas (15-1)

19. \* Molly Cookman (11) The Prairie School (9-10)

20. **Emily Gauger (11) Big Foot/Williams Bay (18-2)**

21. Sarah Horth (10) Kohler (20-5)

22. \* Hannah Altergott (12) Kenosha St. Joseph Catholic Academy (5-5)

23. BYE

24. **Lauren Lindow (10) East Troy (12-0)**

25. \* Erin Horzewski (11) Saint Thomas More (13-5)

26. Olivia Pethan (10) Fox Valley Lutheran (12-2)

27. Madigan Freng (12) West Salem (8-2)

28. **Morgan Dekan (12) Altoona (20-2)**

29. Anna Marie Knabe (12) Xavier (12-0)

30. \* Elle Borowski (11) Sheboygan Falls (9-7)

31. BYE

32. **Erika Curtin (12) Xavier (11-0)**

B. Deang

25 Fri. 9/9 a.m.

1 Thurs. 10:30/10:30 a.m.

41 Fri. 11/11:30 a.m.

2 Thurs. 10:30/10:30 a.m.

26 Fri. 9/9 a.m.

3 Thurs. 10:30/10:30 a.m.

L. Carson

27 Fri. 9/9 a.m.

4 Thurs. 10:30/10:30 a.m.

42 Fri. 11/11:30 a.m.

5 Thurs. 10:30/10:30 a.m.

28 Fri. 9/9 a.m.

6 Thurs. 10:30/10:30 a.m.

7 Thurs. 10:30/11:30 a.m.

29 Fri. 9/9 a.m.

8 Thurs. 10:30/11:30 a.m.

43 Fri. 11:30 a.m./noon

9 Thurs. 10:30/11:30 a.m.

30 Fri. 9/9 a.m.

L. Lindow

10 Thurs. 10:30/11:30 a.m.

31 Fri. 9/10 a.m.

11 Thurs. 10:30 a.m./noon

12 Thurs. 10:30 a.m./noon

32 Fri. 9/10 a.m.

E. Curtin

Loser No. 50

Loser No. 51

Third Place

62

2020 Champion

51 Sat. 9/9 a.m.

Loser No. 41

54 Sat. 9/9 a.m.

Loser No. 42

44 Fri. 11:30 a.m./noon

Loser No. 43

55 Sat. 9/9 a.m.

Loser No. 44

58

Fifth Place

## SEEDED PLAYERS

1. Baluck Deang, Edgewood Sacred Heart
2. Erika Curtin, Xavier
3. Lauren Lindow, East Troy
4. Lauren Carson, Catholic Memorial
5. Fiona O'Flaherty, Aquinas
6. Emily Gauger, Big Foot/Williams Bay
7. Morgan Dekan, Altoona
8. Kate Smith, Racine Saint Catherine's/Racine Lutheran

\* Special Qualifiers





# DIVISION 2 - DOUBLES

First time listed – if indoor & outdoor courts used.  
Second time listed – if only indoor courts used.

## 1. Kala Siddalingaiah (12) Rebecca Daskal (11) University School of Milwaukee (15-2)

Siddalingaiah/Daskal

2. BYE

3. \* Isabel Werner (9) Beatrice Laterman (9) University School of Milwaukee (11-6)

33 Fri. 9 a.m./10 a.m.

4. Grace Sukanen (12) Ava Sukanen (9) Newman Catholic (10-3)

13 Thurs. 11:30 a.m./noon

5. Eve Janavitz (11) Jaqueline Krohn (11) Brookfield Academy (5-3)

14 Thurs. 11:30 a.m./noon

6. Erin Pellegrino (12) Natalie Udovich (11) Kohler (23-3)

15 Thurs. 11:30 a.m./12:30 p.m.

7. \* Jaclyn Palmen (10) Lily Jorgenson (9) The Prairie School (8-3)

34 Fri. 9 a.m./10 a.m.

8. \* Maddie Clevette (12) Abby Davidson (12) Ashland (8-2)

16 Thurs. 11:30 a.m./12:30 p.m.

9. Jada Brunkow (12) Phoebe Jerome (12) Barron (17-1)

Brunkow/Jerome

10. BYE

35 Fri. 10 a.m./10:30 a.m.

11. \* Samantha Buchner (10) Maeve Shanahan (11) Edgewood Sacred Heart (1-3)

17 Thurs. 11:45 a.m./12:30 p.m.

12. Amelia Topolski (12) Morgan Thill (12) Aquinas (12-2)

18 Thurs. 11:45 a.m./12:30 p.m.

13. Abi Knox (12) Natasha Davis (12) Shorewood (12-5)

19 Thurs. 11:45 a.m./12:45 p.m.

14. Charlee Gauger (9) Ella Reichenbacher (12) Aquinas (10-0)

20 Thurs. 11:45 a.m./12:45 p.m.

15. Julia Krien (12) Josie LaJuene (12) West Salem (6-2)

21 Thurs. noon/12:45 p.m.

16. \* Sophie Rondeau (10) Katie Metcalf (10) East Troy (7-2)

22 Thurs. noon/12:45 p.m.

17. Adrienne Morning (12) Teigan Petersilka (9) Regis (20-1)

23 Thurs. noon/12:45 p.m.

18. \* Paige Diercks (12) Lexington Berger (10) Rice Lake (8-6)

24 Thurs. noon/12:45 p.m.

19. Gabrielle Davis (12) Magdelyn Dreifuerst (11) The Prairie School (6-2)

25 Thurs. noon/12:45 p.m.

20. Emily Dorow (11) Jeslyn Singson (11) Catholic Memorial (7-5)

26 Thurs. noon/12:45 p.m.

21. Averie Varsho (12) Ally Wagner (12) Altoona (16-3)

27 Thurs. noon/12:45 p.m.

22. \* Erin Schermetzler (11) Ashlyn Dellemann (11) Roncalli/Two Rivers (9-4)

28 Thurs. noon/12:45 p.m.

23. BYE

24. Cassie Warren (12) Sarah Hoffe (12) Luther (9-0)

29 Thurs. noon/12:45 p.m.

25. Ella Schroeder (11) Marissa Stolt (11) Pacelli (11-3)

30 Thurs. noon/12:45 p.m.

26. Caitlin Klink (12) Evie Shepich (11) Regis (13-2)

31 Thurs. noon/12:45 p.m.

27. Drew Korth (12) Emma Jares (12) Saint Mary Catholic (10-5)

32 Thurs. noon/12:45 p.m.

28. Kylie McCormick (12) Bella Taleon (12) Xavier (10-1)

33 Thurs. noon/12:45 p.m.

29. \* Lily Griffith (11) Rebecca Schultz (11) Saint Mary Catholic (0-0)

34 Thurs. noon/12:45 p.m.

30. Kate Stone (12) Haley Franz (12) Saint Mary's Springs Academy (13-4)

35 Thurs. noon/12:45 p.m.

31. BYE

32. Ava Hoffmann (12) Lily Montes (12) Kohler (21-4)

36 Thurs. noon/12:45 p.m.

(Match times are approximate – players should report a minimum of 20 minutes prior to the listed time.)

Siddalingaiah/Daskal

33 Fri. 9 a.m./10 a.m.

4. Grace Sukanen (12) Ava Sukanen (9) Newman Catholic (10-3)

13 Thurs. 11:30 a.m./noon

5. Eve Janavitz (11) Jaqueline Krohn (11) Brookfield Academy (5-3)

14 Thurs. 11:30 a.m./noon

6. Erin Pellegrino (12) Natalie Udovich (11) Kohler (23-3)

15 Thurs. 11:30 a.m./12:30 p.m.

7. \* Jaclyn Palmen (10) Lily Jorgenson (9) The Prairie School (8-3)

34 Fri. 9 a.m./10 a.m.

8. \* Maddie Clevette (12) Abby Davidson (12) Ashland (8-2)

16 Thurs. 11:30 a.m./12:30 p.m.

9. Jada Brunkow (12) Phoebe Jerome (12) Barron (17-1)

Brunkow/Jerome

10. BYE

35 Fri. 10 a.m./10:30 a.m.

11. \* Samantha Buchner (10) Maeve Shanahan (11) Edgewood Sacred Heart (1-3)

17 Thurs. 11:45 a.m./12:30 p.m.

12. Amelia Topolski (12) Morgan Thill (12) Aquinas (12-2)

18 Thurs. 11:45 a.m./12:30 p.m.

13. Abi Knox (12) Natasha Davis (12) Shorewood (12-5)

19 Thurs. 11:45 a.m./12:45 p.m.

14. Charlee Gauger (9) Ella Reichenbacher (12) Aquinas (10-0)

20 Thurs. 11:45 a.m./12:45 p.m.

15. Julia Krien (12) Josie LaJuene (12) West Salem (6-2)

21 Thurs. noon/12:45 p.m.

16. \* Sophie Rondeau (10) Katie Metcalf (10) East Troy (7-2)

22 Thurs. noon/12:45 p.m.

17. Adrienne Morning (12) Teigan Petersilka (9) Regis (20-1)

23 Thurs. noon/12:45 p.m.

18. \* Paige Diercks (12) Lexington Berger (10) Rice Lake (8-6)

24 Thurs. noon/12:45 p.m.

19. Gabrielle Davis (12) Magdelyn Dreifuerst (11) The Prairie School (6-2)

25 Thurs. noon/12:45 p.m.

20. Emily Dorow (11) Jeslyn Singson (11) Catholic Memorial (7-5)

26 Thurs. noon/12:45 p.m.

21. Averie Varsho (12) Ally Wagner (12) Altoona (16-3)

27 Thurs. noon/12:45 p.m.

22. \* Erin Schermetzler (11) Ashlyn Dellemann (11) Roncalli/Two Rivers (9-4)

28 Thurs. noon/12:45 p.m.

23. BYE

24. Cassie Warren (12) Sarah Hoffe (12) Luther (9-0)

29 Thurs. noon/12:45 p.m.

25. Ella Schroeder (11) Marissa Stolt (11) Pacelli (11-3)

30 Thurs. noon/12:45 p.m.

26. Caitlin Klink (12) Evie Shepich (11) Regis (13-2)

31 Thurs. noon/12:45 p.m.

27. Drew Korth (12) Emma Jares (12) Saint Mary Catholic (10-5)

32 Thurs. noon/12:45 p.m.

28. Kylie McCormick (12) Bella Taleon (12) Xavier (10-1)

33 Thurs. noon/12:45 p.m.

29. \* Lily Griffith (11) Rebecca Schultz (11) Saint Mary Catholic (0-0)

34 Thurs. noon/12:45 p.m.

30. Kate Stone (12) Haley Franz (12) Saint Mary's Springs Academy (13-4)

35 Thurs. noon/12:45 p.m.

31. BYE

32. Ava Hoffmann (12) Lily Montes (12) Kohler (21-4)

36 Thurs. noon/12:45 p.m.

\* Special Qualifiers

## SEEDED PLAYERS

- Siddalingaiah/Daskal, University School of Milwaukee
- Hoffmann/Montes, Kohler
- Warren/Hoffe, Luther
- Brunkow/Jerome, Barron
- Knox/Davis, Shorewood
- Dorow/Singson, Catholic Memorial
- McCormick/Taleon, Xavier
- Janavitz/Krohn, Brookfield Academy



Loser No. 52

61

Loser No. 53

Third Place

63

2020 Champion

Loser No. 52

61

Loser No. 53

Third Place

63

2020 Champion

47 Fri. 12:30/1 p.m.

38 Fri. 10 a.m./11 a.m.  
Warren/Hoffe

21. Averie Varsho (12) Ally Wagner (12) Altoona (16-3)

27 Thurs. noon/12:45 p.m.

22. \* Erin Schermetzler (11) Ashlyn Dellemann (11) Roncalli/Two Rivers (9-4)

28 Thurs. noon/12:45 p.m.

23. BYE

24. Cassie Warren (12) Sarah Hoffe (12) Luther (9-0)

29 Thurs. noon/12:45 p.m.

25. Ella Schroeder (11) Marissa Stolt (11) Pacelli (11-3)

30 Thurs. noon/12:45 p.m.

26. Caitlin Klink (12) Evie Shepich (11) Regis (13-2)

31 Thurs. noon/12:45 p.m.

27. Drew Korth (12) Emma Jares (12) Saint Mary Catholic (10-5)

32 Thurs. noon/12:45 p.m.

28. Kylie McCormick (12) Bella Taleon (12) Xavier (10-1)

33 Thurs. noon/12:45 p.m.

29. \* Lily Griffith (11) Rebecca Schultz (11) Saint Mary Catholic (0-0)

34 Thurs. noon/12:45 p.m.

30. Kate Stone (12) Haley Franz (12) Saint Mary's Springs Academy (13-4)

35 Thurs. noon/12:45 p.m.

31. BYE

32. Ava Hoffmann (12) Lily Montes (12) Kohler (21-4)

36 Thurs. noon/12:45 p.m.

Loser No. 45  
56 Sat. 9/10:15 a.m.

Loser No. 46

59

Loser No. 47  
57 Sat. 9/10:15 a.m.

Loser No. 48

Fifth Place

# PROUD SPONSOR OF THE WIAA/ RURAL MUTUAL SPORTSMANSHIP AWARD



*“When you’re faced with a challenge,  
how you respond determines the real winner.”*

Rural Mutual Insurance has been a sponsor of the WIAA/Rural Mutual Insurance Sportsmanship Award since it was started in 1965.

We believe there’s something more important than just winning or losing a tournament. We believe that the team, school, and fans who support their athletes with dignity and class are the true champions.



Visit us to learn more at [www.RuralMutual.com/wiaa](http://www.RuralMutual.com/wiaa)

**Rural Mutual**  
Insurance Company



# Divisions 1 & 2 Participants

## Division 1

QUALIFIERS School (Coach)	Singles	Doubles
Antigo (Aimee Hein) . . . . .	0	1
Arrowhead (Cindy Ziegler-Fritz) . . . . .	0	2
Badger (Paul Lauterbach) . . . . .	1	1
Brookfield Central (Jon Vogt) . . . . .	1	1
Brookfield East (Linda Lied) . . . . .	1	2
Cedarburg (Kaila Haws) . . . . .	1	2
DeForest (Kristin Pachal) . . . . .	1	0
Divine Savior Holy Angels (Melissa Gebhardt) . . . . .	2	2
Franklin (Tim Pappas) . . . . .	2	1
Greendale (Steve Mader) . . . . .	1	1
Hamilton (Alan Schneider) . . . . .	1	0
Homestead (Jsackie Egelhoff) . . . . .	0	2
Hudson (John Dahl) . . . . .	2	2
Kenosha Indian Trail (Angela Konicki) . . . . .	1	1
Kettle Moraine (Ginny Walters) . . . . .	0	1
Kimberly (Joe Holschuh) . . . . .	1	2
Menomonie (Wendy Hastings) . . . . .	1	1
Mukwonago (Ashley Miller) . . . . .	1	1
Muskego (Blake Kraussel) . . . . .	3	1
New Berlin Eisenhower (Fran Katris) . . . . .	0	1
New Richmond (Denise Devereau) . . . . .	1	1
Nicolet (Tim Koppa) . . . . .	2	2
Oak Creek (Lynn Smith) . . . . .	1	1
Oconomowoc (Kevin Friend) . . . . .	1	2
Pewaukee (Jenny Klemme) . . . . .	1	0
Slinger (Laurakartz) . . . . .	2	0
Tomah (Ben Bannan) . . . . .	1	1
Watertown (Andy Dobbins) . . . . .	1	0
Waukesha West (Kari Nelson) . . . . .	1	1
Waunakee (Chris Nuenthel) . . . . .	1	2
Wausau West (Steve Wenninger) . . . . .	2	1
Wauwatosa East (Glen Slonac) . . . . .	1	0
Westosha Central (Alex Ferruzzi) . . . . .	1	1
Whitefish Bay (Trevor Hill) . . . . .	2	2
Whitnall (Mary Frentzel) . . . . .	2	0
Wilmot Union (Lisa Obertin) . . . . .	0	1

## Division 2

QUALIFIERS School (Coach)	Singles	Doubles
Altoona (Greg Emerson) . . . . .	1	1
Amery (Tanya Julson) . . . . .	2	0
Aquinas (Kaylin Kalk) . . . . .	2	2
Ashland (Betty Erickson) . . . . .	0	1
Barron (Neil Shipley) . . . . .	0	1
Big Foot/Williams Bay (Adam Westhauser) . . . . .	2	0
Brookfield Academy (Greg Rackovan) . . . . .	0	1
Catholic Memorial (Jeff Mrochinski) . . . . .	1	1
East Troy (Dave Lindow) . . . . .	1	1

## Division 2 (Continued)

QUALIFIERS School (Coach)	Singles	Doubles
Edgewood Sacred Heart (Alex Mory) . . . . .	1	1
Fox Valley Lutheran (Rodger Segelstrom) . . . . .	1	0
Kenosha St. Joseph Catholic Academy (Todd Growblewski) . . . . .	1	0
Kohler (Brad Hoffmann) . . . . .	1	2
Luther (Mark Ross) . . . . .	0	1
Medford (Jake Bucki) . . . . .	1	0
Newman Catholic (Leah Herdrich) . . . . .	1	1
Pacelli (Joyce Krusa) . . . . .	0	1
Racine Saint Catherine's/Racine Lutheran (Todd Anderson) . . . . .	1	0
Regis (Kyle Seyer) . . . . .	1	2
Rice Lake (Maite Oyarbide-Sanchez) . . . . .	1	1
Roncalli/Two Rivers (Amanda Kudick) . . . . .	0	1
Saint Mary Catholic (Lizzy Auth) . . . . .	1	1
Saint Mary's Springs Academy (Sherri Brannen) . . . . .	0	1
Saint Thomas More (Joe Switalski) . . . . .	1	0
Sheboygan Falls (Elliot Simenz) . . . . .	1	0
Shorewood (Eric Nelsen) . . . . .	0	1
The Prairie School (Nich Schafer) . . . . .	1	2
University School of Milwaukee (Matt Flack) . . . . .	1	2
Watertown Luther Prep (Tim Wrobel) . . . . .	1	0
Waupun (Jess TerBeest) . . . . .	1	0
West Salem (Julie Kamla) . . . . .	1	1
Xavier (Rick Jandl) . . . . .	2	1

## IT'S YOUR CALL...



## BECOME A USTA TENNIS OFFICIAL

- *Do you enjoy tennis?*
- *Do you have sharp vision and the ability to concentrate?*
- *Do you have good communication and organizational skills?*
- *Are you interested in giving back to tennis some of what it has given you?*
- *Have you considered becoming a tennis Official?*

If you are interested in becoming a USTA official,  
Visit: [www.midwesttennisofficials.org](http://www.midwesttennisofficials.org)



## Divine Savior Holy Angels

## DASHERS



From left to right, front row: Tobie Dahm, Delanie Dahm, Ava Depies, Alex Moews, Julia Cyganiak; second row, KK Buettner, Grace Packee, Carolyn Schaefer, Kate Spielbauer, Molly Jex, Emily Martin; third row, Head Coach Melissa Gebhardt, Lailah Young, Joanna Blonski, Madelyn Guillermo, Assistant Coach Brooke Skemp.

## 2020 Results

Overall Record: 13-2

Conference Record: 4-0

Conference Standing: 1st Place

Opponent	W/L	Score
Muskego	L	3-4
Oconomowoc	W	6-1
Homestead	W	6-1
Cedarburg	W	6-1
Brookfield Central	W	5-2
Homestead	L	2-5
Nicolet	W	5-2
Muskego	W	5-2
Wauwatosa West	W	7-0
University School Milwaukee	W	6-1
Menomonee Falls	W	7-0
Brookfield East	W	7-0
Homestead	W	6-1
Arrowhead	W	6-1
Brookfield Central	W	6-1

## Singles

Flight	Name	Grade	Conference Record	Overall Record
1	Carolyn Schaefer	9	4-0	23-1
2	Alex Moews	11	4-0	20-3
3	Grace Packee	11	4-0	15-6
4	Madelyn Guillermo	9	4-0	21-2

## Doubles

Flight	Name	Grade	Conference Record	Overall Record
1	Delanie Dahm	12	4-0	11-7
	Kate Spielbauer	12		
2	Emily Martin	12	4-0	19-0
	Julia Cyganiak	12		
3	Molly Jex	9	4-0	22-0
	Lailah Young	11		

**Head Coach:** Melissa Gebhardt (UW-Madison, 1990)

Career Record/Years: 134-44/8 yrs

School Record/Years: 134-44/8 yrs



## School Facts

**President:** Katie Konieczny

**Principal:** Dan Quesnell

**Athletic Director:** Peggy Seegers-Braun, CMAA

**Assistant Coach(es):** Brooke Skemp

**School Colors:** Red, White & Gold

**School Enrollment:** 1390

**Captain(s):** Delanie Dahm, Emily Martin & Julia Cyganiak

**Athletic Trainer:** Annie Cullen

**School Twitter:** @DSHAHigh School

**Sport Twitter:** @DSHAathletics

## Hudson RAIDERS



From left to right, front row: Betsy Anderson, Ava Wilber, Bailey Finch, Sophia Jonas, Jordan Yacoub, Grace Diedrich, Claire Keech, Sydney Evenson, Helen Vandenbark; second row, Head Coach John Dahl, Lily Holmberg, Maya Youssef, Sophie Pope, Livi Boily, Kira Young, Grace Lewis, Grace Hanson, Assistant Coach Racheal Dahl.

## Singles

Flight	Name	Grade	Conference Record	Overall Record
1	Sophia Jonas	12	8-0	12-1
2	Lily Holmberg	10	8-0	12-1
3	Grace Diedrich	10	8-0	11-2
4	Claire Keech	11	7-0	11-0

## Doubles

Flight	Name	Grade	Conference Record	Overall Record
1	Livi Boily	12	8-0	12-2
	Jordan Yacoub	11		
2	Kira Young	11	8-0	13-0
	Grace Lewis	10		
3	Sophie Pope	12	7-1	11-1
	Bailey Finch	11		

**Head Coach:** John Dahl (UW-La Crosse, 2017)  
 Career Record/Years: 50-6/3 yrs  
 School Record/Years: 50-6/3 yrs

## 2020 Results

**Overall Record:** 10-0

**Conference Record:** 8-0

**Conference Standing:** 1st Place

Opponent	W/L	Score
Menomonie	W	6-1
Menomonie	W	7-0
Chippewa Falls	W	7-0
Chippewa Falls	W	7-0
New Richmond	W	6-1
Rice Lake	W	7-0
Rice Lake	W	7-0
River Falls	W	7-0
River Falls	W	7-0
New Richmond	W	5-2

## School Facts

**District Administrator:** Dr. Nick Ouellette

**Principal:** Mike Ballard

**Athletic Director:** Aaron Moen

**Assistant Coach(es):** Racheal Dahl, Dave Dahl  
 & Carol Szyman

**School Colors:** Navy & White

**School Enrollment:** 1849

**Captain(s):** Livi Boily, Sophia Jonas &  
 Sophie Pope

**Athletic Trainer:** Megan Rinke ATC

**School Twitter:** @hudsonschoolwi

# Muskego WARRIORS



## 2020 Results

**Overall Record:** 12-3

**Conference Record:** 6-3

**Conference Standing:** 2nd Place

**Conference Champion**

Arrowhead



From left to right, front row: Emily Pan, Maddie Vukovic, Christina Pan; second row, Mia Barrett, Catherine Upthegrove, Megan Lambrecht-Scasny; third row, Assistant Coach Jake Adamson, Coach Rick Hayes, Elizabeth Sobieski, Lauren Sobieski, Kayla Gibbs, Olivia Berger, Head Coach Blake Kraussel

Opponent	W/L	Score
Franklin	W	4-3
Hamilton	W	7-0
Divine Savior Holy Angels	W	4-3
Brookfield Central	W	5-2
Brookfield East	W	4-3
Nicolet	W	4-3
Waukesha South	W	7-0
Mukwonago	W	6-1
Divine Savior Holy Angels	L	2-5
Oconomowoc	L	3-4
Waukesha West	W	4-3
Catholic Memorial	L	3-4
Kettle Moraine	W	4-3
Arrowhead	L	3-4
Waukesha North	W	7-0
New Berlin Eisenhower	W	7-0

## Singles

Flight	Name	Grade	Conference Record	Overall Record
1	Elizabeth Sobieski	11	9-0	20-1
2	Christina Pan	11	9-0	21-2
3	Emily Pan	9	11-0	23-0
4	Mia Barrett	12	5-2	10-4

## Doubles

Flight	Name	Grade	Conference Record	Overall Record
1	Lauren Sobieski	11	5-2	14-4
	Megan Lambrecht-Scasny	12		
2	Olivia Berger	11	6-3	7-5
	Kayla Gibbs	10		
3	Maddie Vukovic	11	3-2	7-3
	Catherine Upthegrove	12		

**Head Coach:** Blake Kraussel

Career Record/Year: 12-3/1 yr

School Record/Year: 12-3/1 yr

## School Facts

**District Administrator:** Dr. Kelly Thompson

**Principal:** Todd Irvine

**Athletic Director:** Ryan McMillen

**Assistant Coach(es):** Jake Adamson,  
Rick Hayes, Brian Jansen

**Pep Band Director(s):** Jamie Beckman &  
Matt Mueller

**School Colors:** Red, White & Black

**School Enrollment:** 1666

**Athletic Trainer(s):** Sara Carey & Jacob Gray

**School Twitter:** muskegonorwaysc

**Sport Twitter:** @1warrior



# Oconomowoc RACCOONS



## 2020 Results

**Overall Record:** 14-4

**Conference Record:** 7-1

**Conference Standing:** 3rd Place

**Conference Champion**

Arrowhead



From left to right, front row: Megan Griswold, Alexandra Kysely, Zoe Goeldner, Julia Picco, Karina Manders, Aubrey Berther; second row, Assistant Coach Claire Martin, Juliet Hussey, Hannah Cottick, Mara Hoffmann, Sarah Kopfer, Kathryn Stuckey, Molly Schlosser, Head Coach Kevin Friend.

Opponent	W/L	Score
Divine Savior Holy Angels	L	1-6
Nicolet	W	4-3
Wauwatosa East	W	6-1
Brookfield Central	W	4-3
Mukwonago	W	6-1
Brookfield East	L	3-4
Arrowhead	L	2-5
Catholic Memorial	W	6-1
Waukesha South	W	7-0
Muskego	W	4-3
Catholic Memorial	W	4-3
Kettle Moraine	W	5-2
Waukesha West	W	6-1
Arrowhead	L	3-4
Waukesha North	W	7-0
Watertown	W	6-1
Kimberly	W	5-2
Slinger	W	4-3

## Singles

Flight	Name	Grade	Conference Record	Overall Record
1	Zoe Goeldner	11	7-1	14-9
2	Juliet Hussey	11	5-3	12-9
3	Julia Picco	9	3-2	12-5
4	Hannah Cottick	10	4-1	9-6

## Doubles

Flight	Name	Grade	Conference Record	Overall Record
1	Sarah Kopfer	12	4-0	14-0
	Aubrey Berther	12		
2	Molly Schlosser	12	3-1	10-5
	Megan Griswold	11		
3	Mara Hoffmann	11	3-1	13-2
	Karina Manders	12		

**Head Coach:** Kevin Friend (UW-Whitewater, 2014)

Career Record/Years: 82-47/6 yrs

School Record/Years: 82-47/6 yrs

## School Facts

**District Administrator:** Roger Rindo

**Principal:** Jason Curtis

**Athletic Director:** Kevin Flegner

**Assistant Coach(es):** Claire Martin & Tracy Brandl

**School Colors:** Purple & Gold

**School Enrollment:** 1673

**Sport Twitter:** @OconTennis

Catholic Memorial **CRUSADERS**

From left to right, front row: Emily Dorow, Courtney Sturm, Jeslyn Singson, Grace Dorow, Jessica Jacobson; second row, Assistant Coach Chris Benyousky, Alice McCaffery, Reagan Rebholz, Lauren Carson, Kallyn Sauer, Monika Multhauf, Head Coach Jeff Mrochinski. Not pictured: Shannon Kutcher, Kiah Nepal, Rachael Borg.

**2020 Results**

Overall Record: 11-8

Conference Record: 5-3

Conference Standing: 4th Place

Conference Champion

Arrowhead

Opponent	W/L	Score
Saint Thomas More	W	7-0
Waukesha North	W	7-0
Homestead	L	2-5
Brookfield Central	L	2-5
Oconomowoc	L	1-6
Waukesha South	W	6-1
Arrowhead	L	3-4
Mukwonago	W	6-1
Oconomowoc	L	3-4
Muskego	W	4-3
Waukesha West	W	4-3
Hamilton	W	5-2
Nicolet	L	2-5
New Berlin Eisenhower	W	4-3
Whitefish Bay	L	0-7
Kettle Moraine	L	2-5
Brookfield Academy	W	6-1
Wauwatosa West	W	6-1
Burlington	W	5-0

**Singles**

Flight	Name	Grade	Conference Record	Overall Record
1	Lauren Carson	12	6-1	13-2
2	Courtney Sturm	11	0-3	7-7
3	Jessica Jacobson	9	8-2	19-6
4	Grace Dorow	9	4-5	11-11

**Doubles**

Flight	Name	Grade	Conference Record	Overall Record
1	Emily Dorow	11	1-0	7-4
	Jeslyn Singson	11		
2	Alice McCaffery	12	2-3	6-11
	Reagan Rebholz	11		
3	Monika Multhauf	12	7-1	15-4
	Kallyn Sauer	10		

**Head Coach:** Jeff Mrochinski (Marquette University, 1992)

Career Record/Years: 25-15/2 yrs

School Record/Years: 25-15/2 yrs

**School Facts**

**Administrator:** Donna Bembenek

**Principal:** Laura Anderson

**Athletic Director:** Matt Bergan

**Assistant Coach(es):** Chris Benyousky

**School Colors:** Blue & Gold

**School Enrollment:** 589

**Captain(s):** Lauren Carson, Monika Multhauf,  
Alice McCaffery & Kiah Nepal

**Statistician(s):** Carl Veenendaal

**School Twitter:** @CMHCrusaders

**Sport Twitter:** @CMHtennis



From left to right, front row: Assistant Coach Rory Boll, Logan Grabbins, Ella Johnson, Samantha Buchner, Maeve Shanahan, Ella Kory, Morgan Merckx, Bronte Jenson, Sarah Dunn, Baluck Deang, Head Coach Alex Mory.

## 2020 Results

Overall Record: 3-3

Conference Record: 3-3

Opponent	W/L	Score
Waunakee	L	1-9
Sauk Prairie	L	2-5
DeForest	W	7-3
Baraboo	W	5-2
Watertown	L	4-6
Beaver Dam	W	4-3

## School Facts

**President:** Mike Elliot

**Principal:** Beth Steffen

**Athletic Director:** Chris Zwettler

**Assistant Coach(es):** Rory Boll & Jimmy Benevides

**School Colors:** Maroon & Gold

**School Enrollment:** 485

**Captain(s):** Baluck Deang & Morgan Merckx

**Athletic Trainer:** Danielle Desarrano

**Sport Twitter:** Crusader\_ATH

### Singles

Flight	Name	Grade	Conference Record	Overall Record
1	Baluck Deang	12	5-1	9-1
2	Morgan Merckx	12	2-4	4-5
3	Sarah Dunn	12	3-1	5-2
4	Bronte Jenson	12	5-3	3-2

### Doubles

Flight	Name	Grade	Conference Record	Overall Record
1	Maeve Shanahan	11	0-0	1-1
	Samantha Buchner	10		
2	Sydney Johnson	10	0-0	1-1
	Ella Kory	11		
3	Ella Johnson	11	1-0	4-0
	Logan Grabbins	11		

**Head Coach:** Alex Mory

Career Record/Years: 20-8/3 yrs

School Record/Years: 20-8/3 yrs



# Xavier HAWKS



From left to right, front row: Bella Taleon, Maggie McGinnis, Mary Van Straten, Carly Bomier; second row, Anne Marie Knabe, Kylie McCormick, Erika Curtin, Allyson McGlone, Madie Main, Kelsey Barth; third row, Head Coach Rick Jandl, Assistant Coach Chris Nehrbass.

## 2020 Results

**Overall Record:** 7-0

**Conference Record:** 6-0

**Conference Standing:** 1st Place

Opponent	W/L	Score
Marinette	W	7-0
Fox Valley Lutheran	W	7-0
Menasha	W	7-0
West De Pere	W	6-1
Shawano Community	W	7-0
New London	W	7-0
Shawano Community	W	7-0

## School Facts

**President:** Phil Riley

**Principal:** Mike Mauthe

**Athletic Director:** Kathy Bates

**Assistant Coach(es):** Gary Akgulian,  
Rich VanderHeiden & Chris Nehrbass

**School Colors:** Navy & White

**School Enrollment:** 520

**School Twitter:** @SFXavierhawks

## Singles

Flight	Name	Grade	Conference Record	Overall Record
1	Erika Curtin	12	6-0	11-0
2	Anne Marie Knabe	12	6-0	12-0
3	Maggie McGinnis	10	6-0	11-0
4	Allyson McGlone	12	3-0	5-1

## Doubles

Flight	Name	Grade	Conference Record	Overall Record
1	Kylie McCormick	12	6-0	10-1
	Bella Taleon	12		
2	Carly Bomier	11	6-0	10-1
	Mary Van Stratten	11		
3	Madie Main	12	3-0	5-1
	Kelsey Barth	9		

**Head Coach:** Rick Jandl (UW-Whitewater)

Career Record/Years: 1160-347/8 yrs

School Record/Years: 1160-347/8 yrs

**Amery WARRIORS****2020 Results****Overall Record:** 12-3**Conference Record:** 5-1**Conference Standing:** 2nd Place**Conference Champion**

New Richmond



From left to right, front row: Deidra Meyer; second row, Sophie Whitley, Ashley Benysek, Lidia Curtis, Truc Nguyen; third row, Assistant Coach Shayne Curtis, Ella Gould, Ally de la Cruz, Alaina Rivard, Hannah Bottolfson, Lilly Marquand, Head Coach Tanya Julson. Not pictured: Maya Curtis, Lauren Sobczak, Annie Zinn.

Opponent	W/L	Score
Osceola	W	6-1
Ellsworth	W	7-0
Barron	W	4-2
Mondovi	W	7-0
Medford	W	4-3
Altoona	L	2-5
Luther	L	0-7
Barron	W	6-1
Ellsworth	W	5-2
Unity	W	7-0
New Richmond	L	3-4
Osceola	W	6-1
Rice Lake	W	4-3
Bloomer	W	7-0
Baldwin-Woodville	W	7-0

Tournaments	Place
MBC Conference	2nd

**Singles**

Flight	Name	Grade	Conference Record	Overall Record
1	Sophie Whitley	12	5-0	15-6
2	Hannah Bottolfson	12	4-0	19-3
3	Lilly Marquand	11	6-0	15-1
4	Ella Gould	11	3-1	10-5

**Doubles**

Flight	Name	Grade	Conference Record	Overall Record
1	Deidra Meyer	11	4-1	7-4
	Ally de la Cruz	12		
2	Truc Nguyen	10	2-1	3-5
	Alaina Rivard	11		
3	Maya Curtis	10	0-0	0-0
	Annie Zinn	10		

**Head Coach:** Tanya Julson, UW River Falls**School Facts****District Administrator:** Dr. Shawn Doerfler**Principal:** Josh Gould**Athletic Director:** Jeff Fern**Assistant Coach(es):** Shayne Curtis**Pep Band Director:** Meredith Rhodes-Lundgren**School Colors:** Red & White**School Enrollment:** 482**Captain(s):** Sophie Whitley, Hannah Bottolfson & Lidia Curtis**Athletic Trainer:** Broden Schock



# Team Tournament Participants

**Altoona (5)** – 2001-2 (0-1), 2007-2 (0-1), 2008-2 (0-1), 2009-2 (0-1), 2015-2 (1-1)

**Amery (2)** – 2017-2 (0-1), 2018-2 (0-1)

**Aquinas (4)** – 2000-2 (1-1), 2002-2 (0-1), 2005-2 (0-1), 2006-2 (0-1)

**Arrowhead (2)** – 2014-1 (3-0), 2015-1 (0-1)

**Ashwaubenon (1)** – 2019-1 (0-1)

**Badger (4)** – 2012-1 (0-1), 2014-1 (0-1), 2018-1 (0-1), 2019-1 (1-1)

**Baldwin-Woodville (2)** – 2014-2 (0-1), 2015-2 (0-1)

**Big Foot/Williams Bay (4)** – 2005-2 (0-1), 2006-2 (0-1), 2007-2 (1-1), 2008-2 (0-1)

**Brookfield Central (13)** – 1996-1 (2-1), 1997-1 (0-1), 1998-1 (0-1), 1999-1 (0-1), 2000-1 (1-1), 2001-1 (0-1), 2002-1 (3-0), 2003-1 (3-0), 2004-1 (1-1), 2005-1 (2-1), 2006-1 (3-0), 2007-1 (2-1), 2008-1 (2-1)

**Brookfield East (7)** – 1994-1 (1-1), 1995-1 (0-1), 2014-1 (0-1), 2015-1 (2-1), 2016-1 (0-1), 2017-1 (1-1), 2019-1 (0-1)

**Burlington (1)** – 2013-1 (0-1)

**Catholic Memorial (2)** – 2018-2 (1-1), 2019-2 (2-0)

**Divine Savior Holy Angels (8)** – 2001-1 (3-0), 2004-1 (3-0), 2009-1 (0-1), 2010-1 (1-1), 2011-1 (1-1), 2012-1 (2-1), 2013-1 (1-1), 2018-1 (2-1)

**Durand (2)** – 2000-2 (0-1), 2004-2 (0-1)

**Eau Claire Memorial (21)** – 1997-1 (1-1), 1998-1 (2-1), 1999-1 (2-1), 2000-1 (1-1), 2001-1 (2-1), 2002-1 (0-1), 2003-1 (0-1), 2004-1 (2-1), 2005-1 (0-1), 2006-1 (1-1), 2007-1 (0-1), 2010-1 (0-1), 2011-1 (1-1), 2012-1 (0-1), 2013-1 (2-1), 2014-1 (0-1), 2015-1 (1-1), 2016-1 (1-1), 2017-1 (0-1), 2018-1 (0-1), 2019-1 (0-1)

**Edgewood of the Sacred Heart (11)** – 2003-2 (0-1), 2004-2 (1-1), 2009-2 (0-1), 2010-2 (1-1), 2011-2 (0-1), 2012-2 (1-1), 2013-2 (2-0), 2014-2 (1-1), 2015-2 (2-0), 2016-2 (2-0), 2018-2 (0-1)

**Fond du Lac (1)** – 2008-1 (0-1)

**Fort Atkinson (1)** – 2009-1 (0-1)

**Green Bay Southwest (19)** – 1994-1 (1-1), 1995-1 (1-1), 1996-1 (0-1), 1997-1 (3-0), 1998-1 (1-1), 1999-1 (1-1), 2000-1 (0-1), 2001-1 (0-1), 2002-1 (1-1), 2003-1 (1-1), 2004-1 (0-1), 2005-1 (0-1), 2006-1 (0-1), 2007-1 (1-1), 2009-1 (0-1), 2010-1 (2-1), 2011-1 (0-1), 2012-1 (1-1), 2013-1 (0-1)

**Greendale (7)** – 1994-2 (2-0), 1995-2 (0-1), 1996-2 (1-1), 1997-2 (2-0), 1998-2 (0-1), 1999-2 (2-0), 2008-1 (0-1)

**Homestead (13)** – 1997-1 (0-1), 2002-1 (2-1), 2003-1 (2-1), 2008-1 (3-0), 2009-1 (3-0), 2010-1 (3-0), 2011-1 (3-0), 2012-1 (3-0), 2013-1 (1-1), 2016-1 (3-0), 2017-1 (3-0), 2018-1 (3-0), 2019-1 (3-0)

**Janesville Parker (1)** – 2010-1 (0-1)

**Kenosha Bradford (1)** – 1994-1 (0-1)

**Kenosha St. Joseph Catholic Academy (1)** – 2017-2 (1-1)

**Kenosha Tremper (8)** – 1998-1 (0-1), 1999-1 (0-1), 2001-1 (1-1), 2003-1 (0-1), 2004-1 (0-1), 2005-1 (0-1), 2006-1 (1-1), 2007-1 (0-1)

**Kettle Moraine (1)** – 1996-1 (0-1)

**Kohler (3)** – 2015-2 (0-1), 2016-2 (0-1), 2019-2 (1-1)

**Lakeland (2)** – 1998-2 (0-1), 1999-2 (0-1)

**Luther (1)** – 2019-2 (0-1)

**Madison Edgewood (See Edgewood Sacred Heart)**

**Madison East (9)** – 1995-1 (0-1), 2001-1 (0-1), 2002-1 (0-1), 2004-1 (0-1), 2005-1 (0-1), 2006-1 (0-1), 2007-1, 2008-1 (0-1), 2011-1 (0-1)

**Madison Memorial (2)** – 2005-1 (1-1), 2018-1 (1-1)

**Madison West (13)** – 1994-1 (0-1), 1996-1 (1-1), 1997-1 (2-1), 1998-1 (0-1), 1999-1 (1-1), 2000-1 (0-1), 2003-1 (0-1), 2004-1 (0-1), 2008-1 (1-1), 2009-1 (1-1), 2016-1 (0-1), 2017-1 (1-1), 2019-1 (1-1)

**Manitowoc Lincoln (1)** – 2015-1 (0-1)

**Marshfield (5)** – 1994-1 (2-1), 1995-1 (2-1), 1996-1 (0-1), 2008-1 (1-1), 2009-1 (0-1)

**Middleton (7)** – 2006-1 (0-1), 2007-1 (0-1), 2010-1 (1-1), 2011-1 (0-1), 2012-1 (0-1), 2013-1 (3-0), 2014-1 (1-1)

**Monona Grove (2)** – 2001-2 (1-1), 2003-1 (0-1)

**Monroe (6)** – 1994-2 (0-1), 1995-2 (1-1), 1996-2 (0-1), 1997-2 (0-1), 1998-2 (1-1), 1999-2 (0-1)

**Muskego (1)** – 2019-1 (2-1)

**Neenah (17)** – 1995-1 (0-1), 1996-1 (1-1), 1997-1 (1-1), 1998-1 (1-1), 1999-1 (0-1), 2000-1 (2-1), 2005-1 (1-1), 2006-1 (0-1), 2007-1 (1-1), 2012-1 (0-1), 2013-1 (0-1), 2014-1 (2-1), 2015-1 (3-0), 2016-1 (2-1), 2017-1 (2-1), 2018-1 (0-1), 2019-1 (0-1)

**New Richmond (3)** – 1997-2 (0-1), 2002-2 (0-1), 2003-2 (0-1)

**Newman Catholic (1)** – 2013-2 (0-1)

**Nicolet (14)** – 1994-1 (3-0), 1995-1 (3-0), 1996-1 (3-0), 1998-1 (3-0), 1999-1 (3-0), 2000-1 (3-0), 2009-1 (1-1), 2011-1 (2-1), 2012-1 (1-1), 2013-1 (0-1), 2014-1 (1-1), 2015-1 (0-1), 2016-1 (1-1), 2017-1 (0-1)

**Notre Dame de la Baie Academy (12)** – 2001-2 (0-1), 2002-2 (2-0), 2003-2 (2-0), 2005-2 (1-1), 2007-2 (0-1), 2008-2 (2-0), 2009-2 (2-0), 2010-2 (2-0), 2011-2 (1-1), 2014-1 (0-1), 2017-1 (0-1), 2018-1 (0-1)

**Oak Creek (1)** – 2000-1 (0-1)

**Oconomowoc (2)** – 1994-1 (0-1), 1995-1 (0-1)

**Onalaska (1)** – 1995-2 (0-1)

**Oshkosh West (3)** – 2009-1 (2-1), 2010-1 (0-1), 2011-1 (0-1)

**Pacelli (1)** – 2016-2 (0-1)

**Pulaski (1)** – 2016-1 (0-1)

**Racine Case (1)** – 1997-1 (0-1)

**Racine Park (2)** – 1995-1 (1-1), 1996-1 (0-1)

**Regis (8)** – 2010-2 (0-1), 2011-2 (0-1), 2012-2 (0-1), 2013-2 (0-1), 2014-2 (0-1), 2016-2 (1-1), 2017-2 (0-1), 2019-2 (0-1)

**River Falls (2)** – 1994-2 (0-1), 1996-2 (0-1)

**Roncalli (2)** – 2006-2 (1-1), 2012-2 (0-1)

**Saint Mary Central (2)** – 2000-2 (0-1), 2004-2 (0-1)

**Sheboygan North (2)** – 1994-1 (0-1), 2008-1 (0-1)

**Stevens Point (4)** – 2001-1 (1-1), 2002-1 (1-1), 2003-1 (1-1), 2004-1 (1-1)

**Sun Prairie (3)** – 2015-1 (0-1), 2016-1 (0-1), 2017-1 (0-1)

**The Prairie School (4)** – 2000-2 (2-0), 2001-2 (2-0), 2002-2 (1-1), 2003-2 (1-1)

**University School of Milwaukee (13)** – 2004-2 (2-0), 2005-2 (2-0), 2006-2 (2-0), 2007-2 (2-0), 2008-2 (1-1), 2009-2 (1-1), 2010-2 (0-1), 2011-2 (2-0), 2012-2 (2-0), 2013-2 (1-1), 2014-2 (2-0), 2017-2 (2-0), 2018-2 (2-0)

**Verona (2)** – 2000-1 (0-1), 2002-1 (0-1)

**Waukesha North (1)** – 1997-1 (0-1)

**Waukesha West (1)** – 1998-1 (0-1)

**Waunakee (1)** – 2015-1 (1-1)

**West Bend East (1)** – 1999-1 (0-1)

**Whitefish Bay (11)** – 1994-2 (1-1), 1995-2 (2-0), 1996-2 (2-0), 1997-2 (1-1), 1998-2 (2-0), 1999-2 (1-1), 2005-1 (3-0), 2006-1 (2-1), 2007-1 (3-0), 2010-1 (0-1), 2018-1 (1-1)

**Whitnall (2)** – 2001-1 (0-1), 2002-1 (0-1)

## Badger Receives Sportsmanship Award

The WIAA requires good sportsmanship by student-athletes, coaches and spectators at education-based, interscholastic events.

We request your cooperation by supporting the participants and officials in a positive manner. Profane, racial, sexist or ethnic comments, or other intimidating actions directed at officials, student-athletes, coaches or team representatives will not be tolerated and are grounds for removal from the site of competition.

Each year the WIAA and Rural Insurance Companies join in honoring one team in the State Girls Team Tennis Tournament as the State Tournament Sportsmanship Award winner. Badger won the award in 2019 for their outstanding display of sports-

manship by athletes, coaches and fans. Teams in the 2020 State Tournament will again be competing for the Sportsmanship Award to be announced after the conclusion of competition. The state tournament experience is enhanced for all when good sportsmanship is evident. We look forward to our teams and fans exhibiting the best in sportsmanship and enthusiasm during the 2020 State Tournament.



### Past Sportsmanship Winners

Year	Winner	Honorable Mention	Year	Winner	Honorable Mention
1995	Marshfield	None	2007	Big Foot/Williams Bay	Neenah
1996	Monroe	Green Bay Southwest, Marshfield, Neenah, Racine Park, River Falls, Whitefish Bay	2008	Notre Dame de la Baie Academy	Marshfield, University School of Milwaukee
1997	Monroe	New Richmond, Racine Case, Waukesha North	2009	Oshkosh West	Altoona, Notre Dame de la Baie Academy
1998	Eau Claire Memorial	Greendale, Kenosha Tremper, Lakeland, Monroe, Neenah	2010	Green Bay Southwest	Notre Dame de la Baie Academy
1999	Monroe	Nicolet	2011	Eau Claire Memorial	Notre Dame de la Baie Academy, Oshkosh West, Regis
2000	Neenah	Durand	2012	Roncalli	Green Bay Southwest
2001	Altoona	Kenosha Tremper, Monona Grove, Stevens Point, The Prairie School	2013	Middleton	Regis
2002	Stevens Point	The Prairie School	2014	University School of Milwaukee	None
2003	The Prairie School	None	2015	Neenah	Altoona, Edgewood of the Sacred Heart, Waunakee
2004	Eau Claire Memorial	Green Bay Southwest, Madison Edgewood, Madison West	2016	Homestead	Pacelli
2005	Madison Memorial	Neenah, Notre Dame de la Baie Academy	2017	Amery	None
2006	University School of Milwaukee	Neenah	2018	Eau Claire Memorial	None
			2019	Badger	Kohler





# State Champions

Year	Schools	Champion (Coach)	Runner-up (Coach)	Singles Champion	Doubles Champion
1971	59	Whitefish Bay 21 (Janet Starks)	Nicolet (Helen Warren) & Wauwatosa West 15 (Carol Millen)	Debbie Arps, Wauwatosa West	Kris Bachman/Karin Bachman, Whitefish Bay
1972	82	Wauwatosa West 20 (Carol Millen)	Nicolet 17 (Helen Warren)	Debbie Arps, Wauwatosa West	Kathy Ptacek/Jane Weinfurter, Wauwatosa East
1973	86	Wauwatosa West 22 (Susan Dryburgh)	Nicolet 20 (Sandi Gleisner)	Karen Weis, Wauwatosa West	Amy Bachman/Karin Bachman, Whitefish Bay
1974	108	Whitefish Bay 18 (Jackie Seidler)	Nicolet (Sandi Gleisner) & Wauwatosa West (Susan Dryburgh)	Karen Weis, Wauwatosa West	Amy Bruecker/Colleen Wilson, Whitefish Bay
1975	125	Nicolet 28 (Sandi Gleisner)	Whitefish Bay 22 (Jackie Seidler)	Laura Gordon, Brookfield Central	Leanne Groban/Sherri Morris, Nicolet
1976	148	Nicolet 46 1/2 (Cary Bachman)	Whitefish Bay 43 (Jackie Seidler)	Amy Bachman, Whitefish Bay	Leanne Groban/Sherri Morris, Nicolet
1977	152	Nicolet 39 (Cary Bachman)	Whitefish Bay 29 1/2 (Jackie Seidler)	Chris Breed, Brookfield Central	Linda Gorens/Nancy Zetley, Nicolet
1978	159	Nicolet 34 1/2 (Cary Bachman)	Whitefish Bay 31 (Jackie Seidler)	Nancy Zetley, Nicolet	Sue Strnad/Judy Becker, Nicolet
1979	160	Whitefish Bay 35 (Jackie Seidler)	Nicolet 23 (Cary Bachman)	Ellie Freeman, Whitefish Bay	Marilyn Soergel/Laura Villar, Brookfield Central
1980	163	Nicolet 32 (Cary Bachman)	Brookfield East 20 (Burt Wethe)	Betsy Buetow, Shorewood	Jane Killian/Wren Killian, Nicolet
1981	160	Nicolet 22 (Cary Bachman)	Shorewood 18 (Cheri Strother)	Kris Yahr, Janesville Parker	Linda Waterhouse/Amy Van Ess, Madison Mem.
1982	160	Nicolet 23 (Cary Bachman)	Whitefish Bay 20 (Jackie Seidler)	Patty Crowley, Whitefish Bay	Jill Karofsky/Kristin Moe, Middleton
1983	160	Brookfield Central 32 (Dave Steinbach)	Neenah 24 (Jane Tornow)	Tami Whitlinger, Neenah	Teri Whitlinger/Becky Widener, Neenah
1984	155	Brookfield Central 31 1/2 (Dave Steinbach)	Nicolet 26 1/2 (Cary Bachman)	Tami Whitlinger, Neenah	Teri Whitlinger/Kris Whitney, Neenah
1985	154	Brookfield Central 36 (Dave Steinbach)	Nicolet 25 (Cary Bachman)	Tami Whitlinger, Neenah	Teri Whitlinger/Kris Whitney, Neenah
1986	158	Brookfield Central 28 (Dave Steinbach)	Neenah 26 (Ben DeDecker)	Tami Whitlinger, Neenah	Teri Whitlinger/Cathy Farrell, Neenah
1987	158	Brookfield Central (Dave Steinbach) & Madison Memorial 30 (Jim Roth)		Kathy Dortzbach, Madison Memorial	Heidi Jurczyk/Stephanie Jurczyk, Brookfield Cent.
1988	158	Madison Memorial 30 1/2 (Chris Grainger)	Brookfield Central 28 (Dave Steinbach)	Kathy Dortzbach, Madison Memorial	Colette Gundersen/Carrie Garlough, Madison Mem.
1989	157	Nicolet 20 1/2 (Cary Bachman)	Wauwatosa East 16 (Virginia Schneider)	Stephany Benz, Sun Prairie	Angie Robarge/Katie Harrell, La Crosse Central
1990	157	Nicolet 22 (Cary Bachman)	Brookfield Central 18 (Dave Steinbach)	Colleen Lucey, West Allis Hale	Susan Hoffman/Erin Grambow, Whitefish Bay
1991	156	Brookfield Central 24 (Dave Steinbach)	Brookfield East 20 (Burt Wethe)	Amanda Shinall, Madison Memorial	Erika Wentz/Jenny Cheung, Brookfield Central
1992	159	Nicolet 23 1/2 (J. Cary Bachman)	Madison Memorial 20 (Chris Grainger)	Amanda Shinall, Madison Memorial	Erin Grambow/Katy Hoffman, Whitefish Bay
1993	161	Nicolet 25 (J. Cary Bachman)	Brookfield Central 20 (Dave Steinbach)	Jennifer Hayes, Fond du Lac	Kristin Dodds/Colleen Algrin, Greendale
1994#	162	1 - Nicolet 5 (J. Cary Bachman) 2 - Greendale 4 (Dale Kreske)	Marshfield 2 (Garry Koehler) Whitefish Bay 3 (Kevin Laing)	Jana Hrdinova, Stoughton Kate Hoffman, Whitefish Bay	Jenny Ferguson/Jane Rosecky, Brookfield East Colleen Algrin/Susan Algrin, Greendale
1995#	163	1 - Nicolet 7 (J. Cary Bachman) 2 - Whitefish Bay 7 (Glorianne Mather)	Marshfield 0 (Garry Koehler) Monroe 0 (Jim Bartholf)	Lia Jackson, Nicolet Andrea Nilsen, Union Grove	Molly Opel/Dee Yunk, Sheboygan North Susan Algrin/Stacey Krueger, Greendale
1996#	165	1 - Nicolet 4 (J. Cary Bachman) 2 - Whitefish Bay 5 (Glorianne Mather)	Brookfield Central 3 (Dave Steinbach) Greendale 2 (Dale Kreske)	Lia Jackson, Nicolet Lianna Dorn, Greendale	Katie Reber/Erin Parks, South Milwaukee Susan Algrin/Krysten Leary, Greendale
1997#	165	1 - Green Bay Southwest 4 (Randy Nelson) 2 - Greendale 4 (Dale Kreske)	Madison West 3 (Kathy Koritzinsky) Whitefish Bay 3 (Glorianne Mather)	Lia Jackson, Nicolet Christina Laun, Kiel	Annie Nelson/Emily Appen, Madison Memorial Stephanie Witzak/Briana Dooley, Greendale
1998#	168	1 - Nicolet 4 (Tim Koppa) 2 - Whitefish Bay 6 (Glorianne Mather)	Eau Claire Memorial 3 (Jim Litscher) Monroe 1 (Jim Bartholf)	Kim Plaushines, Kettle Moraine Lianna Dorn, Greendale	Emily Appen/Annie Nelson, Madison Memorial Katie Mulcahy/Laura Saberson, Whitefish Bay
1999#	169	1 - Nicolet 4 (Tim Koppa) 2 - Greendale 4 (Dale Kreske)	Eau Claire Memorial 3 (Jim Litscher) Whitefish Bay 3 (Glorianne Mather)	Caitlin Burke, Cedarburg Kaylan Caiati, Greendale	Lindsey Brock/Stacy Brock, Homestead Kristine Meulendyke/Julia Mohr, Whitefish Bay
2000#	197	1 - Nicolet 4 (Tim Koppa) 2 - The Prairie School 7 (Nich Schafer)	Neenah 3 (Amy Buege) Aquinas [La Crosse] 0 (Frank Menascinco)	Caitlin Burke, Cedarburg Kaylan Caiati, Greendale	Sara Casperson/Kristen Mader, Neenah Kara Metzger/Andrea Bukacek, The Prairie School
2001#	199	1 - Divine Savior Holy Angels 5 (Nancy Massart) 2 - The Prairie School 7 (Nich Schafer)	Eau Claire Memorial 2 (Jim Litscher) Monona Grove 0 (Tim Sharpe)	Caitlin Burke, Cedarburg Kaylan Caiati, Greendale	Elissa Bashleben/Chelsey Casperson, Neenah Kara Metzger/Andrea Bukacek, The Prairie School
2002#	199	1 - Brookfield Central 4 (Dave Steinbach) 2 - Notre Dame 4 (Katie Daker)	Homestead 3 (Jackie Mueller) The Prairie School 3 (Nich Schafer)	Caitlin Burke, Cedarburg Kaylan Caiati, Greendale	Chelsey Casperson/Molly Casperson, Neenah Kara Metzger/Andrea Bukacek, The Prairie School
2003#	203	1 - Brookfield Central 4 (Dave Steinbach) 2 - Notre Dame 5 (Katie Deprey)	Homestead 3 (Jackie Mueller-Egelhoff) The Prairie School 2 (Nich Schafer)	Katie Potts, Divine Savior Holy Angels Tess Reddin, Saint Mary Central	Nikki Hein/Alex Bear, Nicolet Jenny Spears/Amy Lewis, Notre Dame
2004#	203	1 - Divine Savior Holy Angels 6 (Nancy Massart) 2 - University Sch. of Milw. 7 (Michael Davidson)	Eau Claire Memorial 1 (Jim Litscher) Madison Edgewood 0 (Karl Stubben)	Katie Potts, Divine Savior Holy Angels Tess Reddin, Saint Mary Central	Haley Bortz/Amanda Gryniwicz, Divine Savior Holy Angels Emily Lewis/Melissa Lewis, Big Foot/Will. Bay
2005#	207	1 - Whitefish Bay 5 (Phil Kelbe) 2 - University Sch. of Milw. 5 (Michael Davidson)	Brookfield Central 2 (Dave Steinbach) Notre Dame 2 (Shane Lagerman)	Dana Larsen, Whitefish Bay Tess Reddin, Saint Mary Central	Amanda Gryniwicz/Haley Bortz, Divine Savior Holy Angels Sarah Leonard/Sarah Tweddell, Shorewood
2006#	207	1 - Brookfield Central 4 (Dave Steinbach) 2 - University Sch. of Milw. 7 (Michael Davidson)	Whitefish Bay 3 (Phil Kelbe) Roncalli 0 (Mike Halla)	Lauren Gruber, Whitefish Bay Caroline Starck, Big Foot/Williams Bay	Emily Lawent/Dana Larsen, Whitefish Bay Lindsey Balzan/Chelsea Stangel, Roncalli
2007#	208	1 - Whitefish Bay 6 (Phil Kelbe) 2 - University Sch. of Milw. 5	Brookfield Central 1 (Dave Steinbach) Big Foot/Williams Bay 2 (Jim Karedes)	Tessa Lang, Chippewa Falls Caroline Starck, Big Foot/Williams Bay	Rebecca Nelson/Kayley Carswell, Brookfield Cent. Sarah Vandenberg/Saira Khanna, Univ. Sch. of Milw.

(Renee Rousseau-Weber & Harazet Jimenez)

Continued on Page 26

## State Champions – Continued from Page 25

Year	Schools	Champion (Coach)	Runner-up (Coach)	Singles Champion	Doubles Champion
2008#	209	1 – Homestead 5 (Jackie Mueller-Egelhoff)	Brookfield Central 2 (Dave Steinbach)	Aly Coran, Homestead	Lauren Gryniewicz/Scarlett Hoy, Divine Savior Holy Angels
		2 – Notre Dame 5 (Shane Lagerman)	University Sch. of Milw. 2 (Harazet Jimenez)	Caroline Starck, Big Foot/Williams Bay	Elissa Halla/Natalie Foster, Roncalli
2009#	206	1 – Homestead 6 (Jackie Mueller-Egelhoff)	Oshkosh West 1 (Debbie Heinen)	Aly Coran, Homestead	Tara Robey/Sarah Woods, Divine Savior Holy Angels
		2 – Notre Dame 5 (Shane Lagerman)	University Sch. of Milw. 2 (Julia Goldberg)	Shannon Etten, Xavier	Elissa Halla/Natalie Foster, Roncalli
2010#	207	1 – Homestead 7 (Jackie Mueller-Egelhoff)	Green Bay Southwest 0 (Randy Nelson)	Karyn Guttormsen, Kenosha Bradford	Tara Robey/Sarah Woods, Divine Savior Holy Angels
		2 – Notre Dame 7 (Shane Lagerman)	Madison Edgewood 0 (Toby Kinsler)	Maddy Ecker, Univ. Sch. of Milw.	Katie Pott/Christina Schaupp, Notre Dame
2011#	207	1 – Homestead 5 (Jackie Mueller-Egelhoff)	Nicolet 2 (Tim Koppa)	Elizabeth Konon, Homestead	Carly Peck/Sophia Lococo, Homestead
		2 – University School of Milw. 4 (Andy Paley)	Notre Dame 3 (Shane Lagerman)	Ellie Zimmermann, Notre Dame	Riley Kelly/Rebecca Buchanan, Univ. School of Milw.
2012#	208	1 – Homestead 4 (Jackie Mueller-Egelhoff)	Divine Savior Holy Angels 3 (Greg Cromwell)	Elizabeth Konon, Homestead	Sophia Lococo/Anna Kreynin, Homestead
		2 – University School of Milw. 4 (Andy Paley)	Edgewood of the Sacred Heart 3 (Kelly Lagman)	Ali Pollack, Univ. Sch. of Milw.	Lauren Keller/Morgan Molitor, Edgewood of the Sacred Heart
2013#	207	1 – Middleton 5 (Deke Bradley)	Eau Claire Memorial 2 (Jim Litscher)	Lexi Keberle, West Bend East	Shelby Chorney/Tilly Chorney, Waunakee
		2 – Edgewood of the Sacred Heart 4 (Kelly Lagman)	University Sch. of Milw. 3 (Andy Paley)	Grace Larrain, Newman Catholic	Julia Veitinger/Taylor Benard, Univ. School of Milw.
2014#	207	1 – Arowhead 5 (Gina Resch)	Neenah 2 (Kelly Van Handel)	Lexi Keberle, West Bend East	Katya Mikhailenko/Anna Kreynin, Homestead
		2 – University Sch. of Milw. 4 (Andy Paley)	Edgewood of the Sacred Heart 3 (Kelly Lagman)	Claire Czerwonka, Kenosha St. Joseph Catholic Academy	Annie McGrail/Meredith Heckert, Big Foot/Williams Bay
2015#	206	1 – Neenah 4 (Kelly Van Handel)	Brookfield East 3 (Linda Lied)	Emily Luetschwager, Stevens Point	Abbey Webber/Kaisey Skibba, Middleton
		2 – Edgewood of the Sacred Heart 7 (Tod Lacey)	Altoona 0 (Greg Emerson)	Claire Czerwonka, Kenosha St. Joseph Catholic Academy	Riley Strauss/Caroline Taylor, Univ. School of Milw.
2016#	203	1 – Homestead 4 (Jackie Mueller-Egelhoff)	Neenah 3 (Kelly Van Handel)	Emily Luetschwager, Stevens Point	Christine Price/Kiki Risgaard, Neenah
		2 – Edgewood of the Sacred Heart 7 (Jamey Vorlander)	Regis 0 (Kyle Seyer)	Claire Czerwonka, Kenosha St. Joseph Catholic Academy	Abby Fox/Maddie Molitor, Edgewood of the Sacred Heart
2017#	203	1 – Homestead 5 (Jackie Mueller-Egelhoff)	Neenah 2 (Kelly Kanowitz)	Kiki Risgaard, Neenah	Amanda Newman/Hailey Munz, Monona Grove
		2 – University School of Milwaukee 6 (Matt Flack)	Kenosha St. Joseph Catholic Academy 1 (Nony Schwartz)	Veda Sane, University School of Milwaukee	Kaitlyn Kalinka/Megan Setter, Kenosha St. Joseph Catholic Academy
2018#	200	1 – Homestead 4 (Jackie Mueller-Egelhoff)	Divine Savior Holy Angels 3 (Melissa Gebhardt)	Bojana Pozder, Racine Case	Annabelle Crowley/Emma Koppa, Nicolet
		2 – University School of Milwaukee 5 (Matt Flack)	Catholic Memorial 2 (Carl Veenendaal)	Mia Larrain, Newman Catholic	Giana Apolstoli/Megan Setter, Kenosha St. Joseph Catholic Academy
2019#	201	1 – Homestead 4 (Jackie Engelhoff)	Muskego 3 (Sue Vogel)	Jordan Schifano, Divine Savior Holy Angels	Cecile Fuchs/Samantha Fuchs, DeForest
		2 – Catholic Memorial 5 (Jeff Mrochinski)	Kohler 2 (Brad Hoffmann)	Baluck Deang, Edgewood Sacred Heart	Erika Curtin/Ellie Macksood, Xavier

#Beginning in 1994, team champions were determined in separate dual meet competition.



# Award of Excellence

# RECIPIENTS

2019-20



**Appleton North**

**Baldwin-Woodville**

**Baraboo**

**Brookwood**

**Clintonville**

**Crivitz**

**Divine Savior Holy Angels**

**Fort Atkinson**

**Franklin**

**Hilbert**

**Hortonville**

**Johnson Creek**

**Kenosha Christian Life**

**Kenosha St. Joseph Catholic**

**Kenosha Tremper**

**Kimberly**

**Lake Mills**

**Luther**

**Marshfield**

**Mayville**

**Merrill**

**Monroe**

**New Berlin Eisenhower**

**New Berlin West**

**Northland Pines**

**Oak Creek**

**Onalaska**

**Oregon**

**Pewaukee**

**Pius XI Catholic**

**Racine Horlick**

**Racine Lutheran**

**Racine St. Catherine's**

**Saint Croix Central**

**Sauk Prairie**

**Sheboygan Falls**

**Stoughton**

**The Prairie School**

**University School of Milwaukee**

**Watertown**

**Waukesha West**

**Wausau West**

**West Bend East**

**Winter**

**Wisconsin Dells**

**Wisconsin Lutheran**

• Leadership • Sportsmanship • Ethics • Integrity •



# 2019 State Results

## State Individual Championships – UW-Madison – Nielsen Stadium – October 17-19, 2019

### Division 1 - Singles

**Championship** - Jordan Schifano, Divine Savior Holy Angels def. Zaya Iderzul, Badger 6-2, 4-6, 7-5  
**Semifinal** - Jordan Schifano, Divine Savior Holy Angels def. Norah Balthazor, De Pere 5-7, 6-2, 7-5; Zaya Iderzul, Badger def. Natalie Yang, Homestead 3-6, 6-4, 6-4  
**Third Place** - Natalie Yang, Homestead def. Norah Balthazor, De Pere 7-6(2), 7-6(1)  
**Fifth Place** - Natasha Bailey, Wausau West def. Autumn Bruno, Whitnall 3-6, 6-1, 6-4

### Division 1 - Doubles

**Championship** - Cecile Fuchs/Samantha Fuchs, DeForest def. Elena Deslongchamps/Katie Kavanagh, Whitefish Bay 6-3, 6-0  
**Semifinal** - Elena Deslongchamps/Katie Kavanagh, Whitefish Bay def. Lauren Sobieski/Maddie Toboyek,

Muskego 4-6, 7-6(1), 7-5; Cecile Fuchs/Samantha Fuchs, DeForest def. Kate Wade/Sasha Shapsis, Homestead 6-0, 6-3

**Third Place** - Kate Wade/Sasha Shapsis, Homestead def. Lauren Sobieski/Maddie Toboyek, Muskego  
**Fifth Place** - Bridget Brown/Ellie Sprinkmann, Homestead def. Grace Cady/Hannah Cady, Arrowhead 6-1, 6-2

### Division 2 - Singles

**Championship** - Baluck Deang, Edgewood Sacred Heart def. Sarah Gesner, The Prairie School 6-3, 6-7(5), 6-4  
**Semifinal** - Sarah Gesner, The Prairie School def. Lauren Carson, Catholic Memorial 6-2, 1-6, 6-2; Baluck Deang, Edgewood Sacred Heart def. Margaret Bugnacki, Shorewood 7-5, 6-4  
**Third Place** - Lauren Carlson, Catholic Memorial def. Margaret Bugnacki, Shorewood 6-4, 6-3

**Fifth Place** - Shelby Horth, Kohler def. Mallory Moen, Saint Mary Catholic 6-1, 6-4

### Division 2 - Doubles

**Championship** - Erika Curtin/Ellie Macksood, Xavier def. Jensen Christensen/Grace Tostrud, Monroe 6-0, 6-2  
**Semifinal** - Erika Curtin/Ellie Macksood, Xavier def. Rylee Teuteberg/Alex Sturm, Catholic Memorial 6-3, 6-4; Jensen Christensen/Grace Tostrud, Monroe def. Grace Gridley/Stephanie Guy, University School of Milwaukee 6-4, 6-7(4), 6-3  
**Third Place** - Grace Gridley/Stephanie Guy, University School of Milwaukee def. Jensen Christensen/Grace Tostrud, Monroe 6-2, 6-4  
**Fifth Place** - Phoebe Christenson/Jenna Wahl, Luther def. Elena Bourget/Evie Shepich, Regis 5-7, 6-4, 6-2

## State Team Championships UW-Madison – Nielsen Stadium – October 25-26, 2019

(Team match consists of 4 singles matches and 3 doubles matches)

### Division 1 Championship HOMESTEAD 4, MUSKEGO 3

#### SINGLES

Natalie Yang (H) def. Elizabeth Sobieski (M) 5-7, 6-4, 6-3  
Michelle Pan (M) def. Jamie Gebhardt (H) 6-2, 6-2  
Christina Pan (M) def. Anna Head (H) 5-7, 6-3, 7-5  
Tess Lalonde (H) def. Mia Barrett (M) 6-1, 6-1

#### DOUBLES

Maddie Toboyek/Lauren Sobieski (M) def. Sasha Shapsis/Kate Wade (H) 6-4, 6-3  
Ellie Sprinkmann/Bridget Brown (H) def. Megan Lambrecht-Scasny/Stephanie Yerges (M) 6-2, 6-1  
Ashley Chavin/Jillian Diamond (H) def. Katie Uphagrove/Chloe Adamson (M) 6-3, 6-0

### Division 1 Semifinal HOMESTEAD 4, BADGER 3

#### SINGLES

Zaya Iderzul (B) def. Natalie Yang (H) 6-3, 6-1  
Sydney Miller (B) def. Jamie Gebhardt (H) 3-6, 6-1, 10-5  
Annabelle Alberts (B) def. Anna Head (H) 6-7 (4), 6-4, 6-4  
Tess Lalonde (H) def. Tinker Trent (B) 6-3, 6-1

#### DOUBLES

Sasha Shapsis/Kate Wade (H) def. Ava Anderson/Lillie Ripkey (B) 6-3, 6-0  
Ellie Sprinkmann/Bridget Brown (H) def. Sophia Strasser/Maya Lyng (B) 6-0, 6-0  
Ashley Chavin/Jillian Diamond (H) def. Ella Klug/Emma Fassano (B) 4-6, 6-2, 6-3

### Division 1 Semifinal MUSKEGO 5, MADISON WEST 2

#### SINGLES

Abby Bremel (MW) def. Michelle Pan (M) 7-5, 6-1  
Christina Pan (M) def. Abby Lin (MW) 4-6, 6-3, 6-1  
Lucy Friedman (MW) def. Mia Barrett (M) 6-3, 6-4  
Elizabeth Sobieski (M) def. Maddi Bremel (MW) 6-4, 6-1

#### DOUBLES

Maddie Toboyek/Lauren Sobieski (M) def. Camille Vadas/Sophia Knigge (MW) 7-6 (5), 6-0  
Megan Lambrecht-Scasny/Stephanie Yerges (M) def. Meredith Gallagher/Suzanne Oriel (MW) 6-4, 6-0  
Katie Uphagrove/Chloe Adamson (M) def. Ashley Valle/Kathryn Christianson (MW) 4-6, 6-1, 6-2

### Division 1 Quarterfinals HOMESTEAD 6, ASHWAUBENON 1

#### SINGLES

Natalie Yang (H) def. Marisa Marohl (A) 6-3, 6-4

Jamie Gebhardt (H) def. Natasha Schiegg (A) 6-1, 6-4  
Melanie Lamon (A) def. Anna Head, Homestead 1-6, 6-3, 6-4  
Tess Lalonde, Homestead def. Puja Patel (A) 6-1, 6-3

#### DOUBLES

Ellie Sprinkmann/Bridget Brown (H) def. Courtney Behnke/Delaney Christensen (A) 6-1, 6-2  
Ashley Chavin/Jillian Diamond (H) def. Karleigh Conradt/Caitlyn Phillips (A) 6-3, 6-3  
Sasha Shapsis/Kate Wade (H) def. Maddy Coopmans/Kennedy Conradt (A) 6-0, 6-0

### Division 1 Quarterfinals BADGER 4, BROOKFIELD EAST 3

#### SINGLES

Zaya Iderzul (B) def. Lizzie Adams (BE) 6-0, 6-1  
Sydney Miller (B) def. Emma Lo (BE) 6-2, 6-2  
Maggie Krill (BE) def. Annabelle Alberts (B) 6-2, 4-6, 6-4  
Tinker Trent (B) def. Sofia Zapien (BE) 6-3, 6-2

#### DOUBLES

Savannah Kohler/Pyper Scullen (BE) def. Ava Anderson/Lillie Ripkey (B) 4-6, 6-1, 13-11  
Sophia Strasser/Maya Lyng (B) def. Isabelle Phan/Callie Coakley (BE) 6-1, 6-4  
Maddy Heuler/Sam Rifel (BE) def. Ella Klug/Emma Fassano (B) 6-4, 6-2

### Division 1 Quarterfinals MADISON WEST 4, NEENAH 3

#### SINGLES

Maddi Bremel (MW) def. Ava Dunsirn (N) 6-2, 6-2  
Abby Bremel (MW) def. Sophia Paape (N) 6-3, 6-4  
Abby Lin (MW) def. Olivia Heroux (N) 6-0, 6-0  
Liz Risgaard (N) def. Lucy Friedman (MW) 6-0, 6-3

#### DOUBLES

Camille Vadas/Sophia Knigge (MW) def. Ashlyn Brown/Alex Van Zeeland (N) 6-1, 6-2  
Lauren Komblevitz/Shelby Roth (N) def. Meredith Gallagher/Suzanne Oriel (MW) 6-4, 6-3  
Brady Gentile/Meghan Stielow (N) def. Ashley Valle/Kathryn Christianson (MW) 4-6, 6-0, 7-5

### Division 1 Quarterfinals MUSKEGO 5, EAU CLAIRE MEMORIAL 2

#### SINGLES

Elizabeth Sobieski (M) def. Haya Dodin (ECM) 6-0, 4-6, 10-7  
Michelle Pan (M) def. Molly Hower (ECM) 6-4, 6-1  
Christina Pan (M) def. Anna Hoitomt (ECM) 6-0, 6-1  
Abby Jochimsen (ECM) def. Mia Barrett (M) 6-1, 6-0

#### DOUBLES

Maddie Toboyek/Lauren Sobieski (M) def. Katie

Rentzepis/Kimberly Harvey (ECM) 6-1, 6-1  
Megan Lambrecht-Scasny/Stephanie Yerges (M) def. Natalie Harvey/Julia Nick (ECM) 7-5, 6-2  
Lexie Patrow/Lauren Carmody (ECM) def. Katie Uphagrove/Chloe Adamson (M), 7-5, 6-2

### Division 2 Championship CATHOLIC MEMORIAL 5, KOHLER 2

#### SINGLES

Lauren Carson (CM) def. Shelby Horth (K) 6-2, 6-2  
Anushka Mangal (K) def. Emily Dorow (CM) 6-0, 6-1  
Sarah Horth (K) def. Jeslyn Singson (CM) 6-1, 6-0  
Claire Pawlak (CM) def. Nadia Wandschnieder (K) 4-6, 6-4, 6-3

#### DOUBLES

Rylee Teuteberg/Alex Sturm (CM) def. Ava Hoffmann/Olivia Grose (K) 3-6, 6-4, 7-5  
Courtney Sturm/Megan Pahl (CM) def. Erin Pellegrino/Lily Montes (K) 6-2, 6-3  
Reagan Rebholz/Mia Rossi (CM) def. Natalie Udovich/Hannah Shvartsman (K) 2-6, 6-2, 6-3

### Division 2 Semifinal KOHLER 7, LUTHER 0

#### SINGLES

Shelby Horth (K) def. Sarah Hoffer (L) 6-1, 6-0  
Anushka Mangal (K) def. Cassie Warren (L) 6-0, 6-1  
Sarah Horth (K) def. Kaylee Raabe (L) 6-0, 6-3  
Nadia Wandschnieder (K) def. Katherine Bruns (L) 6-1, 6-1

#### DOUBLES

Ava Hoffmann/Olivia Grose (K) def. Phoebe Christenson - Jenna Wahl (L) 6-4, 6-4  
Erin Pellegrino/Lily Montes (K) def. Hannah Larson - Katie Kutz (L) 6-1, 6-4  
Natalie Udovich/Hannah Shvartsman (K) def. Haley Gronholz - Klarissa Miller (L) 6-0, 6-3

### Division 2 Semifinal CATHOLIC MEMORIAL 6, REGIS 1

#### SINGLES

Lauren Carson (CM) def. Caroline Kowieski (R) 3-4, Retired  
Emily Dorow (CM) def. Maddie Metz (R) 6-0, 6-0  
Jeslyn Singson (CM) def. Arianna Smith (R) 7-6 (3), 6-0  
Sofie Merrick (R) def. Claire Pawlak (CM) 6-1, 6-2

#### DOUBLES

Rylee Teuteberg/Alex Sturm (CM) def. Elena Bourget/Evie Shepich (R) 6-3, 2-6, 10-6  
Courtney Sturm/Megan Pahl (CM) def. Adrienne Morning/Caitlin Klink (R) 6-1, 6-0  
Reagan Rebholz/Mia Rossi (CM) def. Lauren Seeman/Marianna Kern (R) 6-1, 6-1



# WHSTCA Wisconsin High School Tennis Coaches Association

## HALL OF FAME HISTORY

1979 – Ben Peacock, Wauwatosa  
 1979 – Milton “Ike” Ruehl, Milwaukee Washington  
 1980 – Ivy Williams, Neenah  
 1981 – Dick Arnold, Waukesha  
 1982 – Leo Kenney, Menasha  
 1988 – Cary Bachman, Nicolet  
 1989 – Bob Duebler, Manitowoc  
 1989 – Wes Holman, Kenosha Tremper  
 1989 – Gordon Kotinek, Beaver Dam  
 1990 – Donald Kuhnke, Wauwatosa West  
 1990 – Ken Wasserman, Oconomowoc  
 1991 – Stan Hillestad, Eau Claire Memorial  
 1995 – Jeff Krumrich, New Berlin West  
 1995 – Jackie Siedler, Whitefish Bay  
 1998 – Chuck Schlitz, Wausau East  
 1998 – David Stimpson, Whitewater  
 1999 – Garry Koehler, Marshfield  
 1999 – Ron Sandven, Sheboygan North

2000 – Jim Laing, University School of Milw.  
 2001 – Bob Erickson, Sheboygan South  
 2001 – T.W. Sievert, Oshkosh  
 2001 – John Stevenson, Manitowoc Lincoln  
 2001 – Norm (Coach) Tebo, Appleton West  
 2002 – Bob Renslo, McFarland  
 2003 – Jerry Brinkman, Plymouth  
 2003 – Bob Neja, West Bend East  
 2004 – Burt Wethe, Brookfield East  
 2005 – Charles Chatman, Kenosha Bradford  
 2005 – Bob Johnson, South Milwaukee  
 2007 – Larry E. Johnson, Amery  
 2007 – Mary Tuchscherer, Wausau East  
 2008 – Denny Schacter, UW-Madison  
 2009 – Jim Bartholf, Monroe  
 2009 – Bill Van Lieshout, Oshkosh North  
 2011 – Ron Nelson, Elkhorn Area  
 2012 – Tom Berven, Neenah

2012 – William Zigmund, Green Bay West,  
 Green Bay Preble & Green Bay Southwest  
 2012 – Mike Donovan, Marquette  
 2012 – Harold Swanson, The Prairie School  
 2013 – James Litscher, Eau Claire Memorial  
 2013 – Dave Steinbach, Brookfield Central  
 2014 – Sherry Nutt, Arrowhead & Pulaski  
 2014 – Trude Mihalovich Pletcher, South Milwaukee  
 2015 – Jackie Egelhoff, Homestead  
 2015 – Bob Feller, Manitowoc Lincoln  
 2015 – Al Carrier, West Bend East  
 2016 – Ben DeDecker, Neenah  
 2016 – Barb Mancuso, Wisconsin Rapids Lincoln  
 2016 – Jim Rumpel, Baldwin-Woodville  
 2018 – Leigh Cherveney, Sheboygan Falls  
 2018 – Dave Kalscheur, Beaver Dam  
 2018 – Bob Nelson, Roncalli  
 2018 – Jerry Pintar, Pius XI Catholic

## COACHING DUAL VICTORIES

### Boys 500 Dual Wins

Dave Steinbach, Brookfield Central

### Boys 400 Dual Wins

Cary Bachman, Nicolet  
 Tom Berven, Neenah  
 Jim Litscher, Eau Claire Memorial  
 Randy Nelson, Green Bay Southwest/  
 Green Bay Preble

### Boys 300 Dual Wins

Jim Bartholf, Monroe  
 Al Carrier, West Bend East  
 Leigh Cherveney, Sheboygan Falls  
 Mike Donovan, Marquette  
 Bob Feller, Manitowoc  
 Bob Heideman, Rhinelander  
 Jim Laing, University School of Milw.  
 Jim Matousek, Brown Deer  
 Bob Nelson, Roncalli  
 Burt Wethe, Brookfield East

### Boys 200 Dual Wins

Jerry Brinkman, Plymouth  
 Mark Chullino, Edgewood  
 Ted Dasler, Lakeland  
 Bob Erickson, Sheboygan South  
 David R. Frank, Marquette Univ. H.S.  
 Stan Hillestad, Eau Claire Memorial  
 Dave Kalscheur, Beaver Dam  
 Garry Koehler, Marshfield  
 Tim Koppa, Nicolet  
 Dale Kreske, Greendale  
 Tom LaFountain, Chilton  
 Dave Lindow, East Troy  
 Nan Perschon, Madison La Follette  
 Jim Rumpel, Baldwin-Woodville  
 Glen Slonac, Wauwatosa East  
 Don Tellefsen, Oak Creek

### Boys 100 Dual Wins

Greg Alt, Waukesha South  
 Dick Amble, Black River Falls  
 Dieter Antoni, Onalaska  
 Rob Boden, Milton  
 Mike Brannen, Union Grove  
 Pete Christofferson, Verona  
 James Christophersen, Bay Port

### Boys 100 Dual Wins (Continued)

Murray Gleffe, Green Bay East/Ashwaubenon  
 Rick Gloe, Ashwaubenon  
 Chris Grainger, Madison Memorial  
 Jon Hilding, Hudson  
 Wes Holman, Kenosha Tremper  
 Greg Isermann, Middleton  
 Vern Jordan, Fort Atkinson  
 Jim Karedes, Big Foot/Williams Bay  
 Paul Kollmorgen, Martin Luther  
 Shane Lagerman, Notre Dame  
 Floyd Le Douton, Marinette  
 Barb Mancuso, Wisconsin Rapids Linc.  
 Mike Montello, New Richmond  
 Camilla Owen, Janesville Craig  
 Bob Renslo, McFarland  
 Chuck Schlitz, Wausau East  
 Dave Smith, Marshfield  
 David Stimpson, Whitewater  
 Wendy Tauscheck, Kohler  
 Bill Van Lieshout, Oshkosh North  
 Carl Veenendaal, Catholic Memorial  
 Bob Verkins, Appleton East

### Girls 600 Dual Wins

Randy Nelson, Green Bay Southwest

### Girls 500 Dual Wins

Dave Steinbach, Brookfield Central

### Girls 400 Dual Wins

Wendy Hastings, Menomonie  
 Jim Litscher, Eau Claire Memorial

### Girls 300 Dual Wins

Dave Lindow, East Troy  
 Tim Nelson, Whitewater

### Girls 200 Dual Wins

Cary Bachman, Nicolet  
 Sandy Cherveney, Sheboygan Falls  
 Dave Dahl, Hudson  
 Bob Heideman, Rhinelander  
 Paul Kappelman, Two Rivers  
 Garry Koehler, Marshfield  
 Tim Koppa, Nicolet  
 Kathy Koritzinsky, Madison West  
 Jim Laing, University School of Milw.  
 Ron Nelson, Elkhorn Area

### Girls 200 Dual Wins (Continued)

Mark Ross, Luther  
 Jim Rumpel, Baldwin-Woodville  
 Mary Tuchscherer, Wausau East

### Girls 100 Dual Wins

Andrew Address, Hartford Union  
 Jim Bartholf, Monroe  
 Russ Borman, Chippewa Falls  
 Mike Brannen, Union Grove  
 Amy Buege, Neenah  
 Jack Cepek, Wisconsin Rapids  
 Gail Champion, Franklin  
 Charles Chatman, Kenosha Bradford  
 Pete Christofferson, Verona  
 Mark Chullino, Edgewood  
 Mike Daniels, Divine Savior Holy Angels  
 Bill Davis, Marshfield  
 Rosemary Dolatowski, Burlington  
 Jackie Egelhoff, Homestead  
 Greg Emerson, Altoona  
 Bob Erickson, Sheboygan South  
 Chris Grainger, Madison Memorial  
 Mark Happel, Verona Area  
 Gary Jackson, Madison East  
 Randy Juley, Newman Catholic  
 Dave Kalscheur, Beaver Dam  
 Jim Karedes, Big Foot/Williams Bay  
 Paul Kollmorgen, Martin Luther  
 Dale Kreske, Greendale  
 Teresa Kvam, New Richmond  
 Shane Lagerman, Notre Dame  
 Glenn Lehnert, De Pere  
 Trude Mihalovich, South Milwaukee  
 Camilla Owen, Janesville Craig  
 Tom Pacetti, Kenosha Tremper  
 Nan Perschon, Madison La Follette  
 Bob Renslo, McFarland  
 Kevin Roop, Aquinas  
 Nancy Schmidt, Stevens Point  
 Ginger Schneider, Wauwatosa East  
 Kyle Seyer, Regis  
 Glen Slonac, Wauwatosa East  
 David Stimpson, Whitewater  
 Wendy Tauscheck, Kohler  
 Dan Thies, Milton  
 Bill Van Lieshout, Oshkosh North  
 Burt Wethe, Brookfield East

The Wisconsin High School Tennis Coaches Association is an organization geared to benefit the following areas:

1. High School Tennis (girls and boys) – top ten list, rules, All State Team.
2. To educate the coaches on rules, strategy, skills, and mental aspects of tennis – clinic and rules test.
3. To build collegiality among the coaches.
4. To recognize the outstanding job being done currently and in the past by Wisconsin tennis coaches – 100, 200, 300, 400 Victory Certificates; Coaches of the Year; and Hall of Fame awards.



# 2020 WIAA Scholar Athlete Award Recipients

The WIAA salutes the 32 winners of the 2020 Scholar Athlete Award. These young men and women are chosen for this prestigious honor on the basis of academic excellence, athletic participation, co-curricular activities, essay responses, civic and community involvement.



**Zachary DeGroot**  
Aquinas



**Kayla Bahr**  
Aquinas



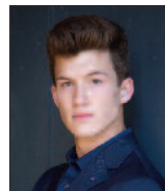
**Linzy Sendelbach**  
Arcadia



**Matthew Marcinske**  
Birchwood



**Lauren Steien**  
Blair-Taylor



**Luke Fox**  
Catholic Memorial



**Maya Novack**  
Cedarburg



**Kameri Meredith**  
Colfax



**Jadin O'Brien**  
Divine Savior Holy Angels



**Tommy Larson**  
East Troy



**Marissa Ellenbecker**  
Edgar



**Devon Jay Davey**  
Elkhorn Area



**Charlie Stuhl**  
Ellsworth



**Logan Lillehaug**  
Frederic



**Alec Martzahl**  
Kimberly



**Zach Slevin**  
La Crosse Logan



**Caden Chier**  
Lourdes Academy



**Katelyn Kitzinger**  
Marinette



**Aubrey Schoeneman**  
Mercer



**Isaac Lindsey**  
Mineral Point



**Brittany Helm**  
Muskego



**Lauren Shields**  
Newman Catholic



**Alex Vance**  
Oconomowoc



**Izzy Carroll**  
Platteville



**Skylar White**  
River Ridge



**Max Schwabe**  
Stratford



**Kortnie Volk**  
Three Lakes



**Charles Motiff**  
Washburn



**Anne Dotzler**  
Waunakee



**Marc Sippel**  
Wausau West

*The WIAA Scholar/Athlete Award program is  
made possible by a grant from the Marshfield Clinic.*



**Marshfield Clinic**  
Don't just live. Shine.



**Jacob Reichmann**  
Wauzeka-Stauben



**Laura Beghin**  
Wisconsin Dells

# Kids belong out here.



## We help keep them here.

At Marshfield Children's, we believe kids belong playing sports, cheering on their favorite teams and having fun with other children. Our network of primary and specialty care helps keep them there.

In communities across Wisconsin, our pediatricians are supported by more than 40 children's specialties - like pediatric orthopedics, behavioral health and dermatology - all working together to keep your child in the game.

## For the love of kids.

[marshfieldchildrens.org](http://marshfieldchildrens.org)



marshfield  
children's